



PALM

BEDS: 3
BATHS: 2 1/2

PRIVATE ELEVATOR

From Garage to Patio

OFFICE-/BEDROOM

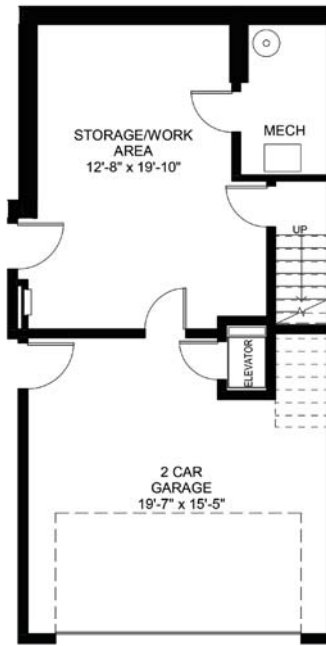
Bonus room

ROOF PATIO

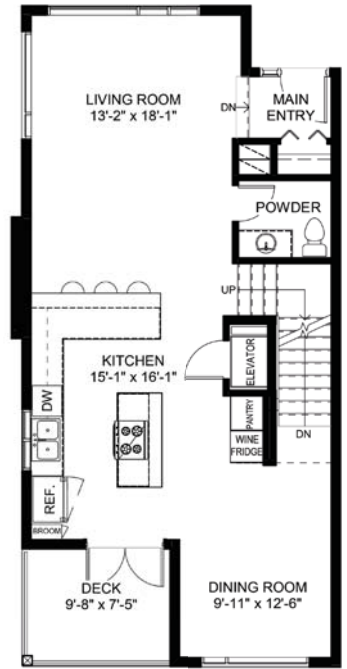
With Kitchenette and Storage Room

Total living area: 2075 SQ.FT

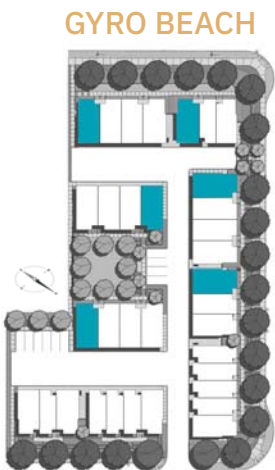
Garage: 364 SQ.FT
Bonus Area: 465 SQ.FT
Main Level: 740 SQ.FT
Upper Level: 735 SQ.FT
Roof Level Patio: 674 SQ.FT



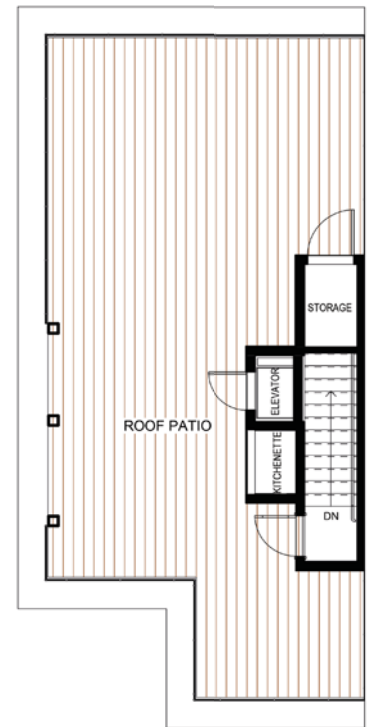
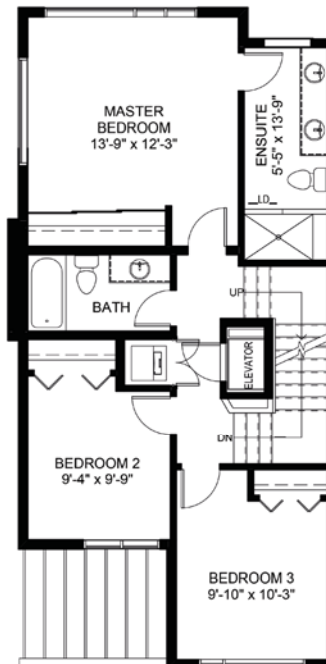
ENTRY LEVEL



MAIN LEVEL



GYRO BEACH



The Developer reserves the right to make changes without notice. E&O.E
Northern Lights Land Development Corp. , © April 2019