



SURF

BEDS: 3
BATHS: 2 1/2

PRIVATE ELEVATOR

From Garage to Patio

ROOF PATIO

With Kitchenette and Storage Room

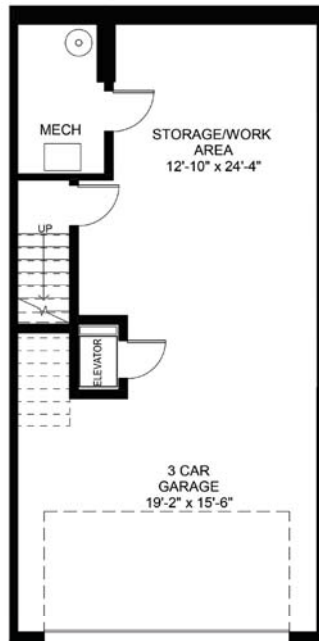
Total living area: 1675 SQ.FT

Entry Level/Garage: 636 SQ.FT

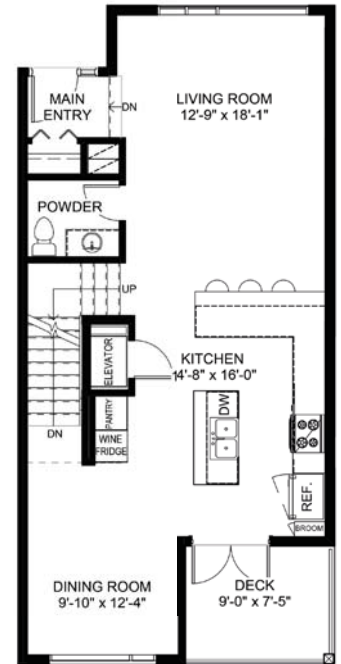
Main Level: 724 SQ.FT

Upper Level: 719 SQ.FT

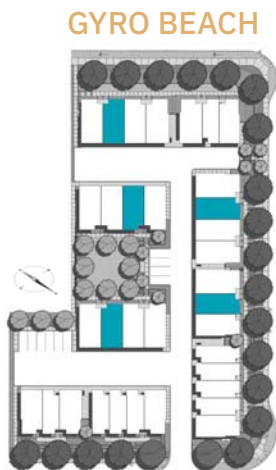
Roof Level Patio: 655 SQ.FT



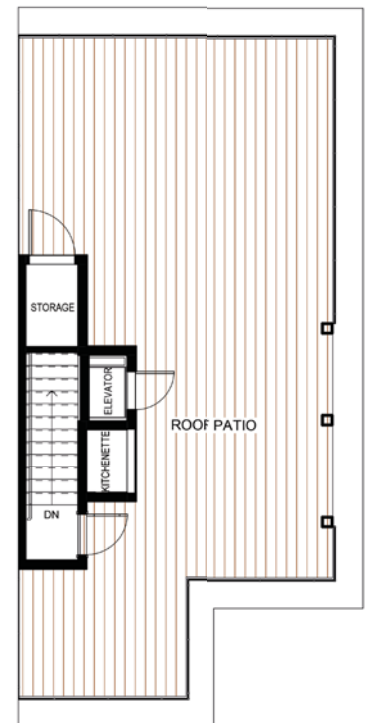
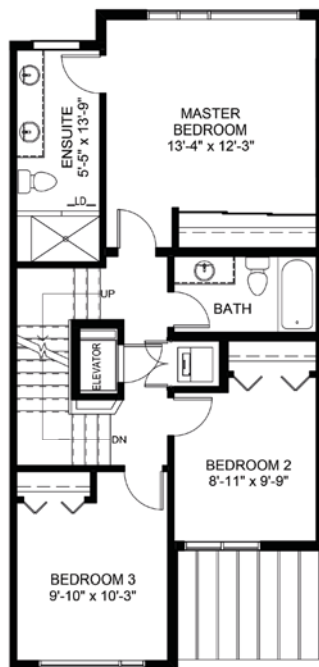
ENTRY LEVEL



MAINLEVEL



GYRO BEACH



The Developer reserves the right to make changes without notice. E&O.E
Northern Lights Land Development Corp. , © April 2019

GYROBEACH.CA