



nova

1424 VINEYARD DRIVE



nova

1424 VINEYARD DRIVE

1424 Vineyard Drive

Lakeview Heights, West Kelowna

Custom Built Luxury

- 3 Bedrooms + Den
- 3 Bathroom
- 3-Car Garage
- Private Yard
- Unobstructed lake views



250-575-1946

NovaOnVineyard.com

BRIGHT. NEW. THIS IS NOVA.

NOVA is inspired by the views. Whether it's the magnificent Okanagan Lake and starry night views out the front or the quiet solitude with the mountains as the backdrop in the back, **NOVA** attracts attention.

This is **NOVA**. Bright. New. A shining star in a sought-after, exclusive neighbourhood.

Live in a wine lover's paradise. One of West Kelowna's most desirable neighbourhoods, known for expansive lake views, and a strong sense of community. Live minutes from the West Kelowna Wine Trail and some of the Okanagan's top boutique and world-class wineries.

BEHIND THE BUILD

Brightshore Developments Ltd. is a subsidiary of OCL Group Inc., focused on providing high-quality multifamily developments and single-family homes in the Okanagan region. We take pride in our premium finishings, superior craftsmanship, and commitment to customer satisfaction for each of our projects.

Trimount has successfully delivered a multitude of projects across Western Canada, and together, bring a wealth of experience in the development and construction industry. Trimount is committed to providing leadership and expertise on all our projects. Trimount's vision is to help build communities with quality conventional projects that are sustainable and bespoke to every community's needs.

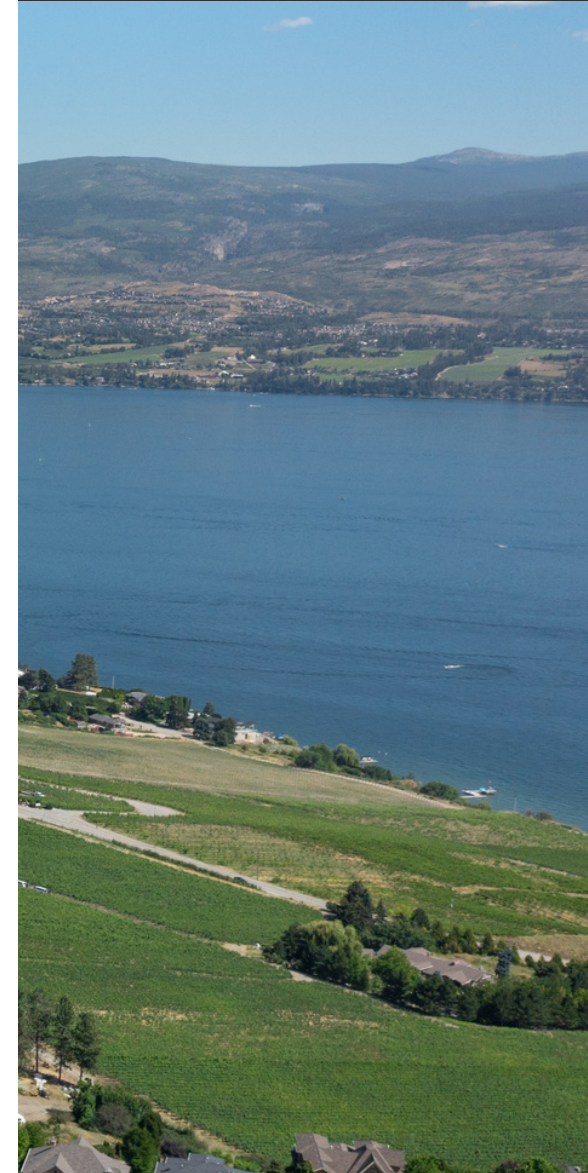


BRIGHTSHORE
DEVELOPMENTS LTD

unitii | TRIMOUNT

nova

1424 VINEYARD DRIVE





Elevated Features:

EXTERIOR DESIGN

- Sleek contemporary designs with elements of natural wood grain, stucco and stone.
- Stained cedar cladding, cedar posts, hardie board composite siding, acrylic stucco and stone veneer.
- Extra large 3-car garage with additional tandem area with room for your toys and modern steel flush garage doors

KITCHEN

- Solid-surface countertops
- Custom island great for preparing meals
- Walk-in pantry for all your storage needs
- Matte black cabinets
- Stylish, modern light fixtures
- Modern, stainless-steel appliances including:
 - Kitchen Aid SS Gas Cooktop and Oven
 - SS Faber hood vent
 - Frigidaire SS French door Fridge/Freezer
 - Miele "Panel Read" Hidden Dishwasher
 - Kitchen Aid SS Microwave
 - Electrolux Washer/Dryer
 - Silhouette Double Door beverage fridge

INDOOR LIVING

- 10' high ceilings providing more space for your comfort
- Luxury plank flooring
- Custom cabinetry
- Modern matte black hardware
- 42" natural gas fireplace set into a modern feature wall
- Stylish staircase with glass side panels
- Primary ensuite with seamless shower, soaker tub, double sinks, and heated flooring
- Lower level wet bar
- Dual pane windows

OUTDOOR LIVING

- Three outdoor living spaces great for entertaining, relaxing and enjoying the outdoors
- Trellised upper back patio and front facing balcony with spectacular lake views
- Upper decks include 42" aluminum railing with glass inserts and vinyl plank flooring overtop waterproof membrane.
- Covered back patio with hot tub electrical hookup on the lower level

250-575-1946

NovaOnVineyard.com

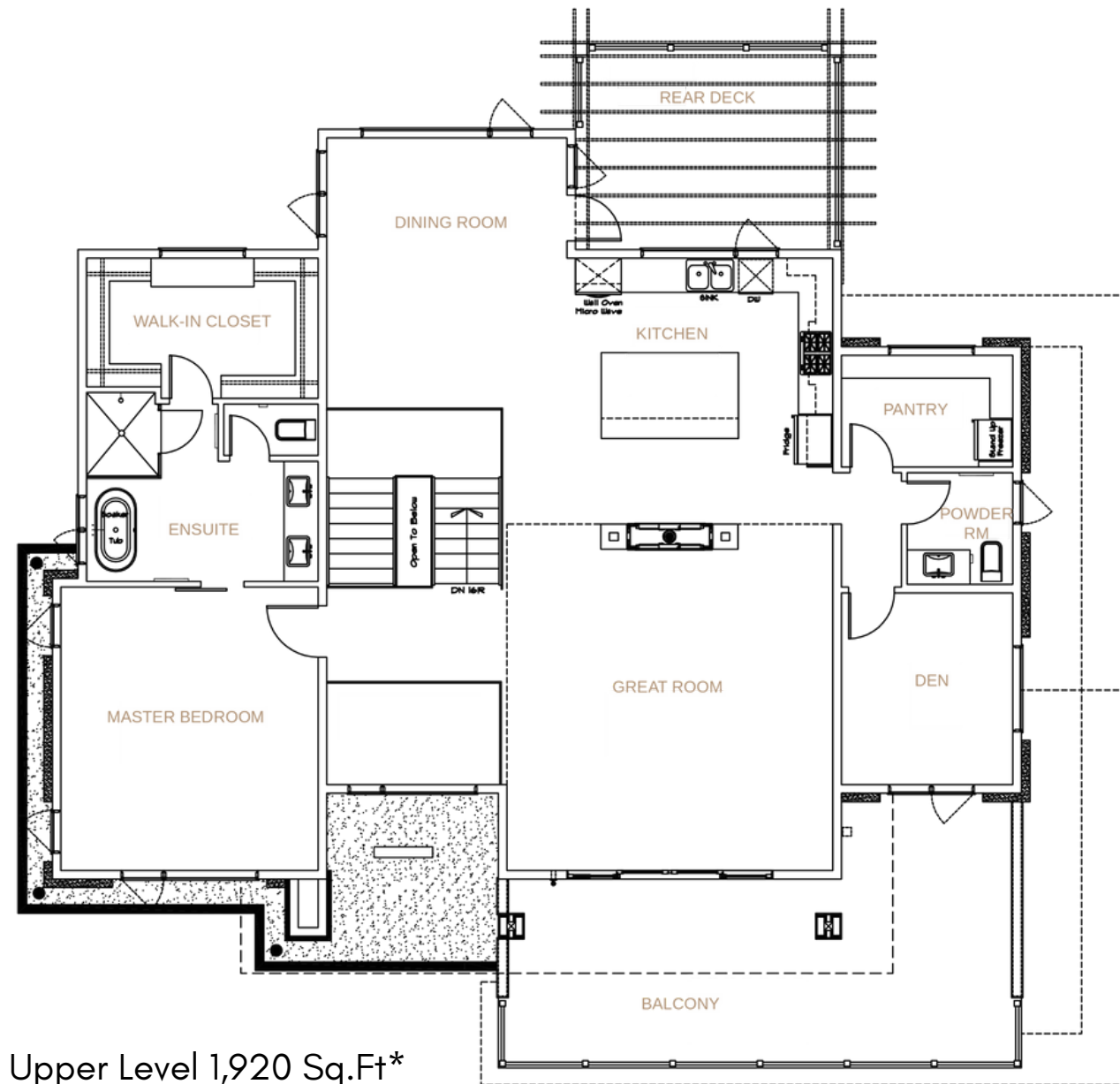
nova

1424 VINEYARD DRIVE

3 Bedrooms + Den
3 Bathrooms
3-Car Garage

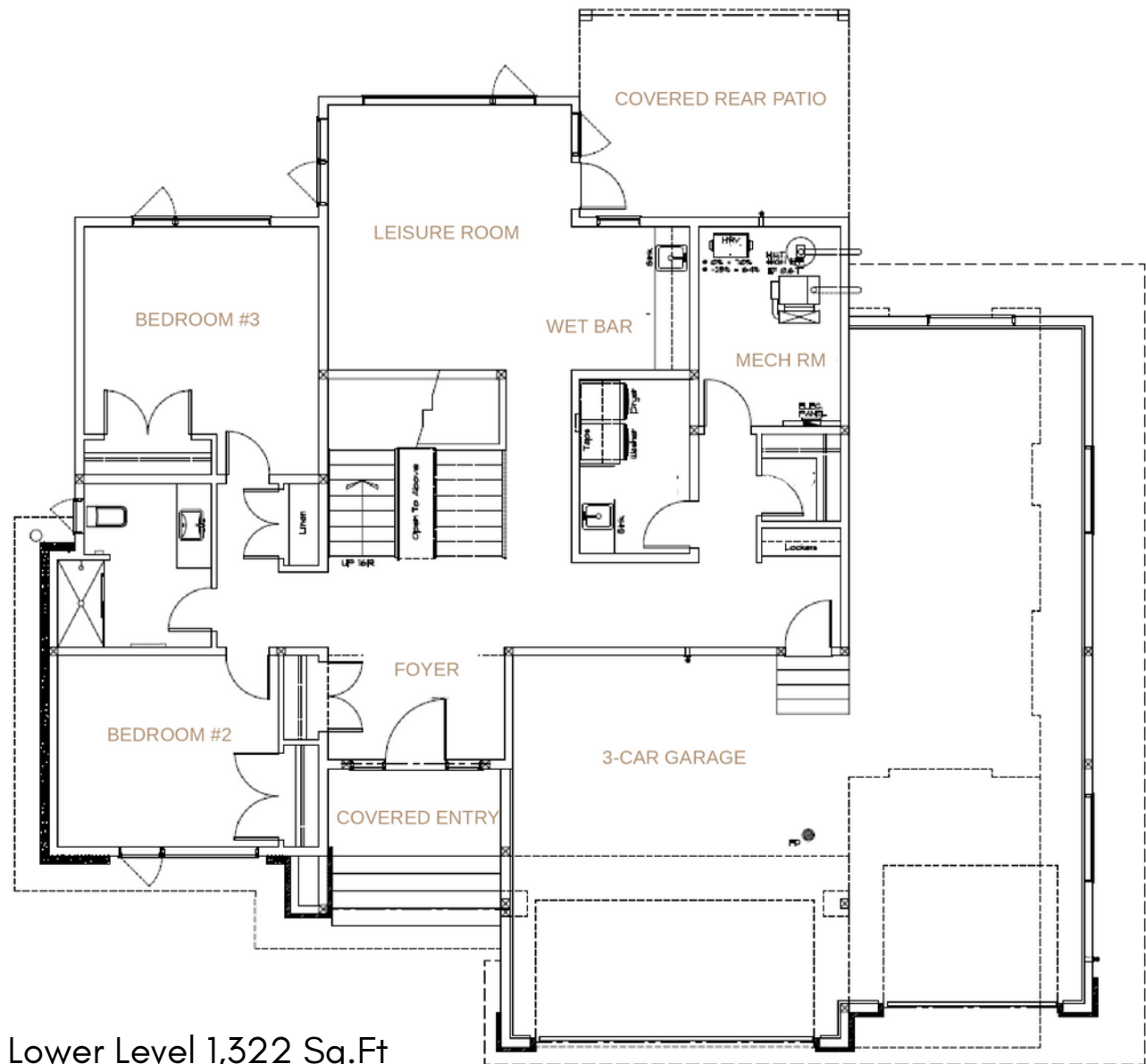
Lower Level 1,322 Sq.Ft*
Upper Level 1,920 Sq.Ft*

Total 3,242 Sq.Ft*



Upper Level 1,920 Sq.Ft*

*The developer/builder reserves the right to modify sizes, specs and features at any time. E&O.E.



Lower Level 1,322 Sq.Ft

*The developer/builder reserves the right to modify sizes, specs and features at any time. E&O.E.

250-575-1946

NovaOnVineyard.com

nova

1424 VINEYARD DRIVE

LEARN MORE ↓



PROUDLY PRESENTED BY NYROSE & ASSOCIATES



DARCY NYROSE

Personal Real Estate Corporation.

250-575-1946

darcy@kelownarealestatepros.com



NEHEMIAH DAEHN

REALTOR®

250-575-4138

nehemiah@kelownarealestatepros.com

info@**Nova**OnVineyard.com / **Nova**OnVineyard.com

* The information contained herein is assumed correct but is not guaranteed by the listing agent and should be verified. Measurements are approximate. Renderings are artist's representation only. E&OE.

www.kelownarealestatepros.com

250-258-9888 | contact@kelownarealestatepros.com



COLDWELL BANKER
HORIZON REALTY