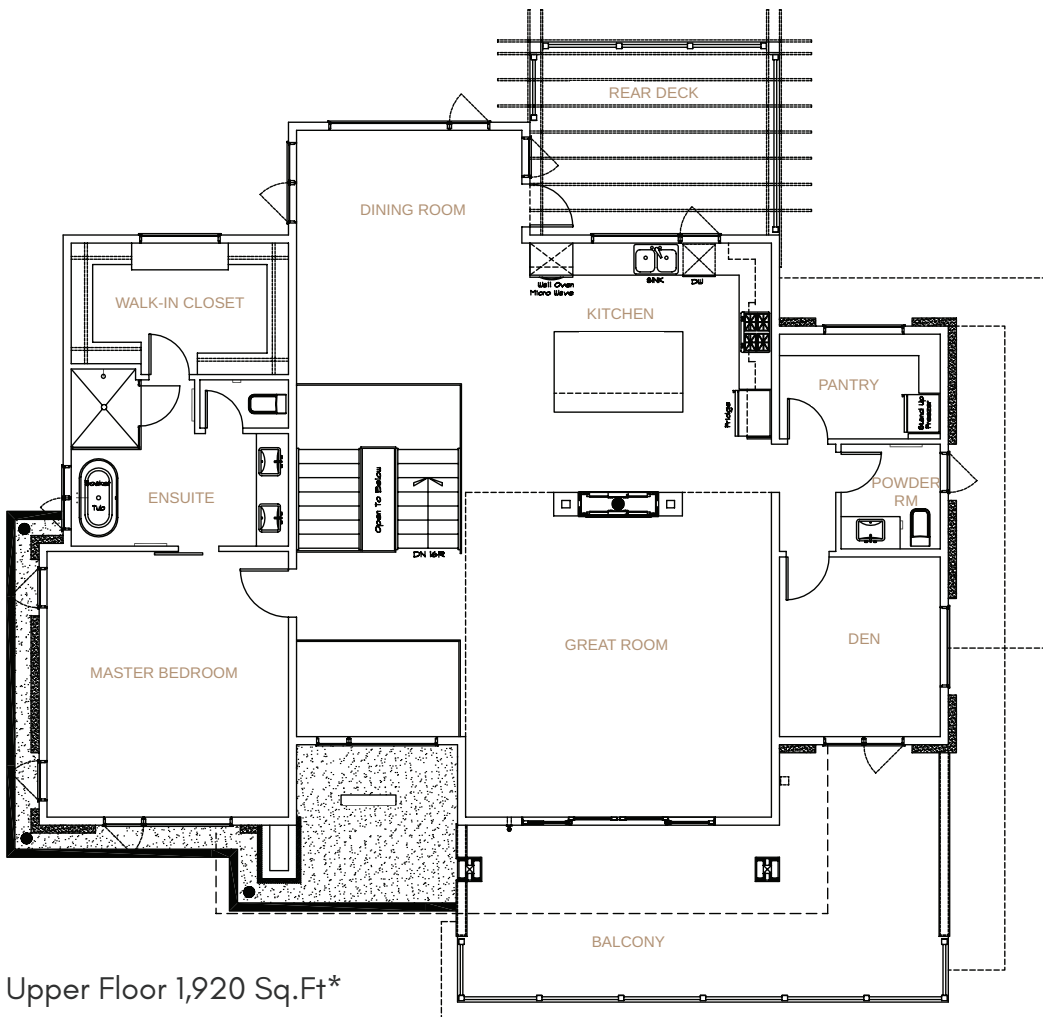
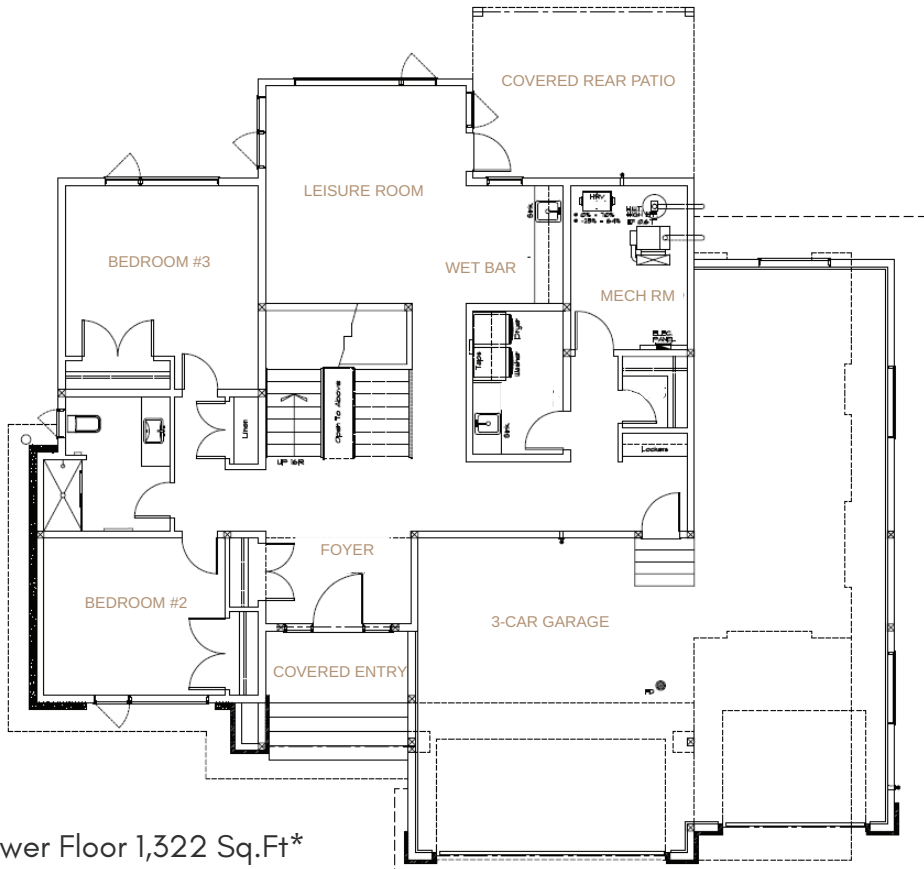


nova

1424 VINEYARD DRIVE



Upper Floor 1,920 Sq.Ft*



Lower Floor 1,322 Sq.Ft*

3 Bedrooms + Den
3 Bathrooms
3,242 Sq.Ft*

Call Nyrose & Associates

Darcy Nyrose

PERSONAL REAL ESTATE CORPORATION

250-575-1946

Nehemiah Daehn

REALTOR ©

250-575-4138

info@novaonvineyard.com

NovaOnVineyard.com



unitii TRIMOUNT



Sales & marketing by Nyrose & Associates | Coldwell Banker Horizon Realty. This is not an offering for sale. *The developer/builder reserves the right to modify sizes, specs, features and pricing at any time. Renderings are artist's concept only. E & O.E.