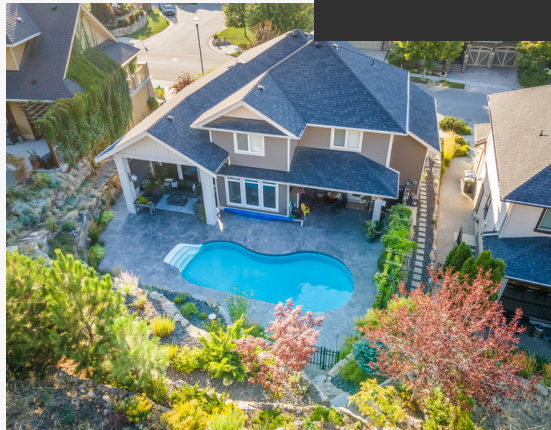


NYROSE

AND ASSOCIATES



5507 MOUNTAINSIDE DRIVE



PERFECT FAMILY HOME IN KETTLE VALLEY





5+ 

4 

3492 Sq. Ft.*

THE HOME:

Perfect for your family, this 5-bedroom home features a beautifully landscaped yard with saltwater pool backing onto a linear park. Bright open living spaces and large windows bring in plenty of natural light and upstairs you'll find a peek-a-boo view of the lake!

THE FEATURES:

- Year Built: 2014
- 5 bedrooms and den
- 4 bathrooms
- Beautiful travertine tile flooring
- Gas fireplace on main level
- Kitchen features oversized island with sink, updated stainless steel appliances, granite countertops and butler's pantry
- Main floor den
- Primary ensuite includes free standing tub, double sinks, and walk-in closet
- Lower level perfect for teens, guests or extended family with family room, wet bar, 2 bedrooms & full bathroom
- 3-car garage with one over-height door for boat/rv
- Private backyard with pool

THE NEIGHBOURHOOD:

Kettle Valley is one of Kelowna's most coveted communities, renowned for luxury homes and its family-friendly sense of community. With community amenities including a neighbourhood pub and corner store, easy access to hiking and biking trails right out your door, beautiful parks, and some of the best views of the city, it's easy to see why Kettle Valley is so beloved by those who call it home.



Your DREAM home in Kettle Valley awaits.

5507 Mountainside Drive



PROUDLY PRESENTED BY NYROSE & ASSOCIATES



DEREK NYROSE
REALTOR®

250-878-8817

derek@kelownarealestatepros.com



DARCY NYROSE

Personal Real Estate Corporation

250-575-1946

darcy@kelownarealestatepros.com

YOUR NOTEPAD

WHAT YOU LOVE ABOUT THIS HOME

*The information contained herein is assumed correct but is not guaranteed by the listing agent and should be verified. Measurements are approximate.



Nyrose Team: 250-258-9888
www.kelownarealestatepros.com

Coldwell Banker Horizon Realty: 250.860.7500
14-1470 Harvey Ave., Kelowna BC V1Y9K8