

THE PEAKS

— KELOWNA, BC —



CONTEMPORARY TOWNHOMES WITH ROOFTOP LIVING

The Peaks features 35 spectacular townhomes with contemporary finishes and spacious rooftop patios in an outstanding Glenmore location.

With 2-and-3-bedroom townhomes ranging from 1,182 sqft to 1,500 sqft, The Peaks combines timeless finishes with contemporary design. Whether you are buying your first home, a home for your growing family, or downsizing into your next chapter, every home at The Peaks features the same great design elements and style.



Located beside Knox Mountain in beautiful Kelowna, BC, this quiet but connected community provides instant access to an abundance of walking trails. Enjoy the convenience of Downtown Kelowna within a short drive to restaurants, shopping, cafes, entertainment, and outdoor recreation. The Peaks, an ideal location for your Kelowna lifestyle.

THE PEAKS

— KELOWNA, BC —

Nyrose and Associates
778-200-5634



thepeaksliving.ca

Developer reserves the right to make changes and modifications to size and specifications. Final design, construction, and features may differ. This is not an offering for sale. Any such offerings may only be made with a Disclosure Statement. E.&O.E. Sales & Marketing by DNA Project Marketing and Nyrose & Associates | RE/MAX Kelowna.

LIVE & ENTERTAIN IN STYLE



WARM



COOL





FEATURES

ELEVATE THE EVERYDAY

The Peaks offers contemporary designs, timeless finishes and functional indoor/outdoor living spaces designed to enrich your lifestyle.

- All homes include your own fenced yard, upper deck and rooftop patio
- Most homes have side-by-side double-attached garages
- Choice of 2 curated colour schemes - Cool or Warm
- Vinyl plank flooring throughout the main level and lower entry
- Premium carpet on stairs and upper level
- In-suite laundry with washer and dryer
- Standard 2" horizontal faux wood white window coverings
- Roughed-in electric vehicle station
- Natural gas heating and cooling system
- Hotwater on demand
- Energy-efficient double-glazed windows with an abundance of natural light
- 2/5/10 new home warranty

ON TREND KITCHENS - A RECIPE FOR FUNCTION AND STYLE

- Spacious kitchen layouts with islands for easy meal preparation
- Designer cabinets
- Quartz countertops
- KitchenAid stainless steel appliances including:
 - Counter depth refrigerator with bottom freezer
 - Dual fuel gas stove
 - Dishwasher
- Distinctive tile backsplash
- Dual basin stainless steel under-mount sink with Moen faucet
- LED disk lighting

EMBRACE THE OUTDOORS

Entertain in style with your own private rooftop patio surrounded by expansive mountain and valley views.

- Additional main level deck and fenced yard
- Roughed-in gas BBQ outlet on all decks
- Standard frost free hose bib
- Built-in irrigation system

CONTEMPORARY BATHROOMS

- Sleek glass shower stall
- Tile flooring in all bathrooms
- Quartz countertops in ensuite and main bathroom
- Designer cabinets
- Moen faucets
- Large wall-mounted mirror with modern light bar
- Heated floor in ensuite

THE IDEAL LOCATION

- Steps to Knox Mountain walking & biking trails
- 5 minutes to Glenmore shops & restaurants
- 10 minutes to all the amenities of Downtown Kelowna
- 5-10 minutes to a variety of Kelowna's parks and beaches
- 5 minutes to craft breweries and wine
- 5-10 minutes to Glenmore schools and 15 minutes to UBCO
- 15 minutes to Kelowna International Airport

OPTIONAL UPGRADES*

*Contact your Peaks' Property Specialist for a full list of optional upgrades

THE PEAKS

— KELOWNA, BC —

Nyrose and Associates
778-200-5634

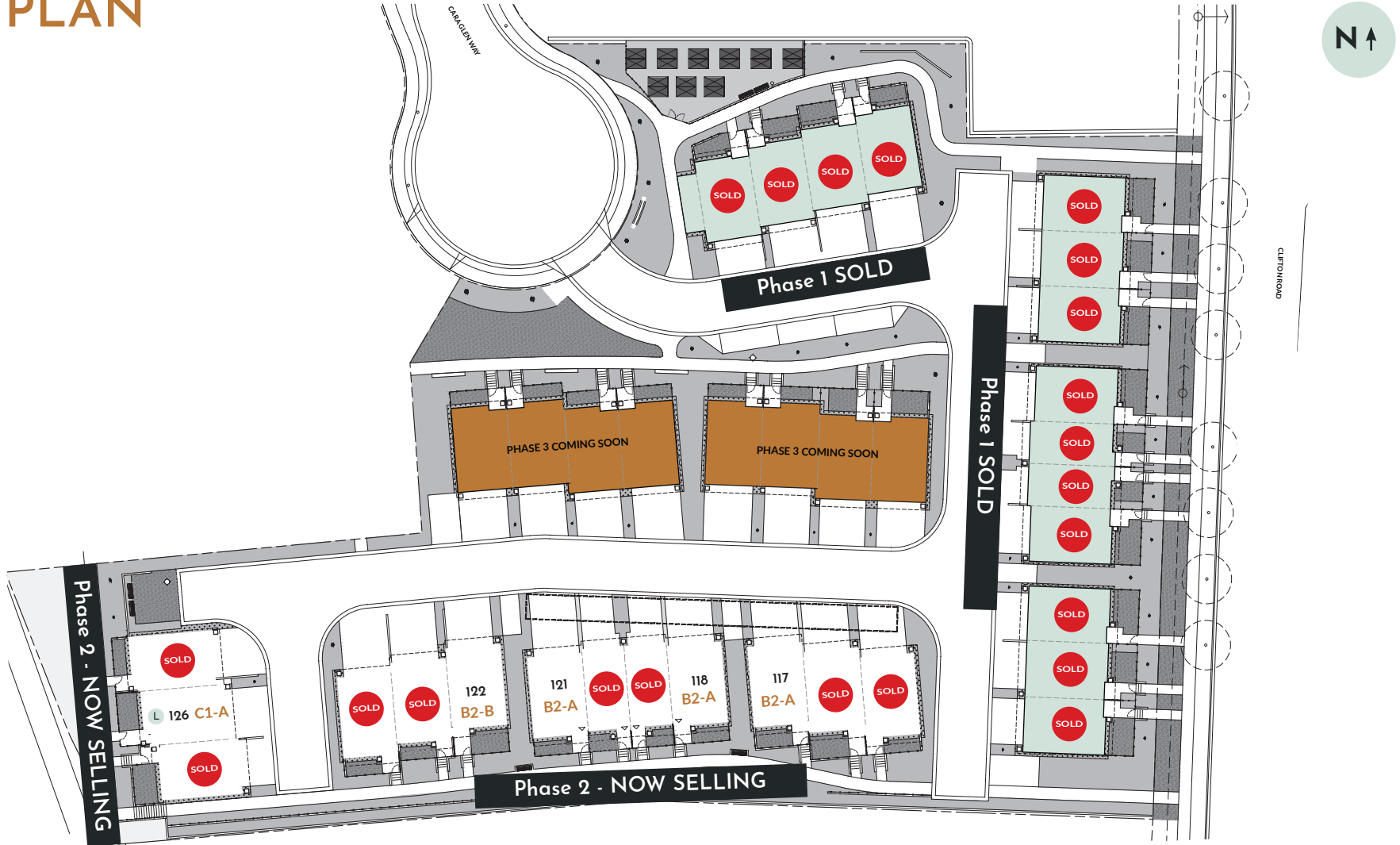


thepeaksliving.ca

Developer reserves the right to make changes and modifications to size and specifications. Final design, construction, and features may differ. This is not an offering for sale. Any such offerings may only be made with a Disclosure Statement. E.&O.E. Sales & Marketing by DNA Project Marketing and Nyrose & Associates | RE/MAX Kelowna.



SITE PLAN



THE PEAKS

— KELOWNA, BC —

Nyrose and Associates
778-200-5634



thepeaksliving.ca

Developer reserves the right to make changes and modifications to size and specifications. Final design, construction, and features may differ. This is not an offering for sale. Any such offerings may only be made with a Disclosure Statement. E.&O.E. Sales & Marketing by DNA Project Marketing and Nyrose & Associates | RE/MAX Kelowna.

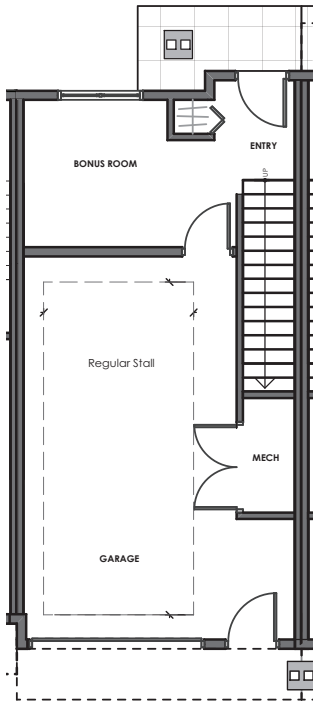
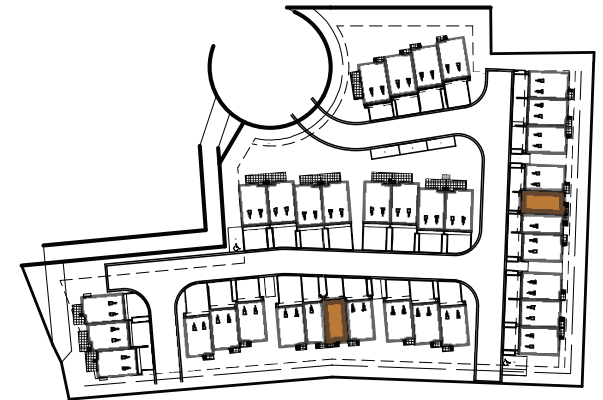


ALPINE (A1)

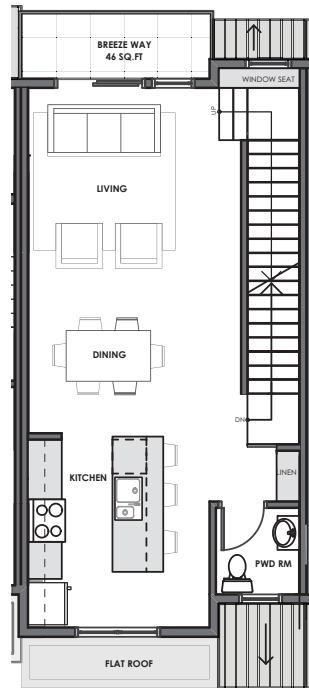
2-BEDROOM, 3-BATHROOM
1 CAR GARAGE

Homes #109 & #119

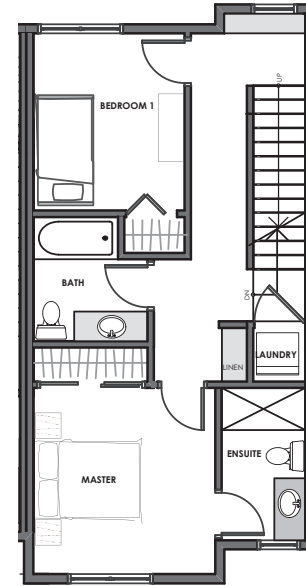
Total Interior: 1,182 Sq.Ft*
Total Exterior: 321 Sq.Ft*
Total Living: 1,503 Sq.Ft*



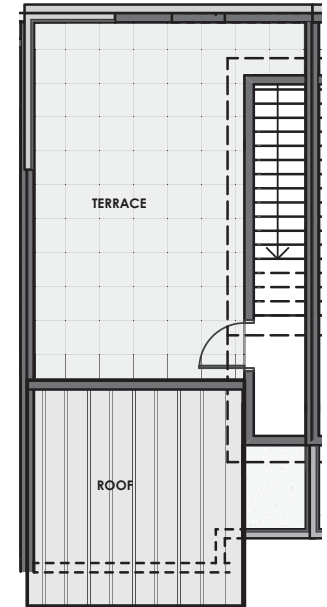
204 SQ.FT*



474 SQ.FT*



504 SQ.FT*



275 SQ.FT*

THE PEAKS

— KELOWNA, BC —

Nyrose and Associates
778-200-5634



thepeaksliving.ca

Developer reserves the right to make changes and modifications to size and specifications. Final design, construction, and features may differ. This is not an offering for sale. Any such offerings may only be made with a Disclosure Statement. E.&O.E. Sales & Marketing by DNA Project Marketing and Nyrose & Associates | RE/MAX Kelowna.

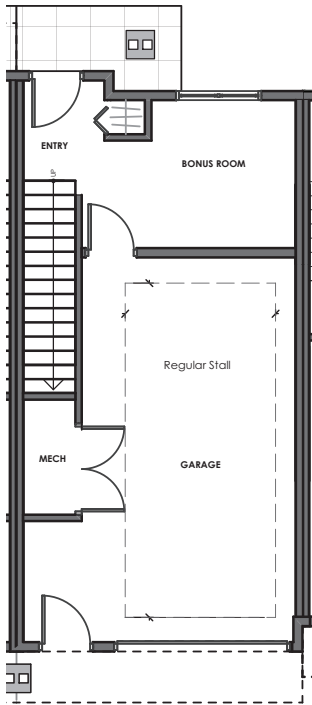
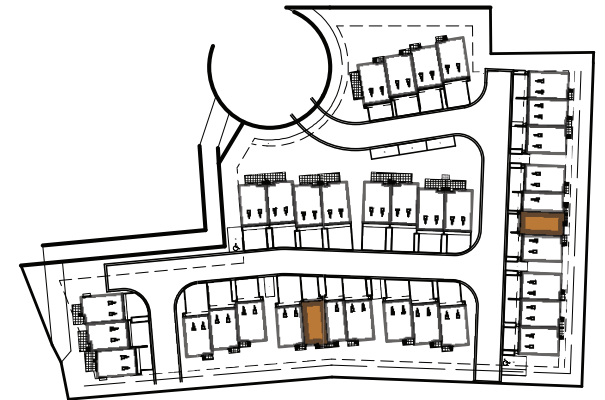


ALPINE (A2)

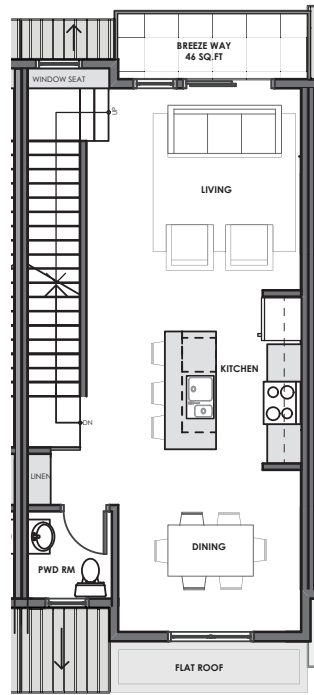
2-BEDROOM, 3-BATHROOM
1 CAR GARAGE

Homes #110 & #120

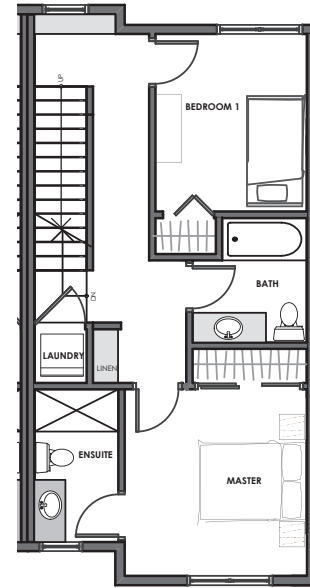
Total Interior: 1,182 Sq.Ft*
Total Exterior: 321 Sq.Ft*
Total Living: 1,503 Sq.Ft*



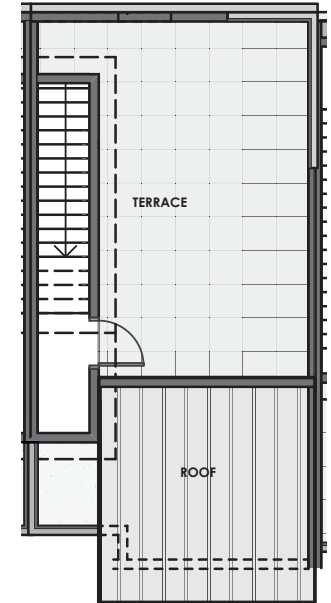
204 SQ.FT*



474 SQ.FT*



504 SQ.FT*



275 SQ.FT*

THE PEAKS

— KELOWNA, BC —

Nyrose and Associates
778-200-5634



thepeaksliving.ca

Developer reserves the right to make changes and modifications to size and specifications. Final design, construction, and features may differ. This is not an offering for sale. Any such offerings may only be made with a Disclosure Statement. E.&O.E. Sales & Marketing by DNA Project Marketing and Nyrose & Associates | RE/MAX Kelowna.

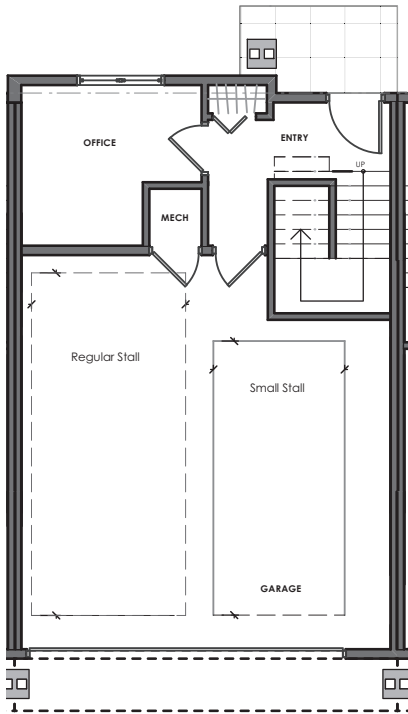
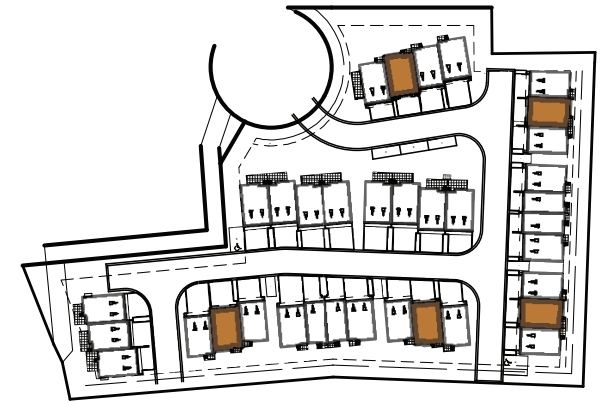


BOULDER (B1-A)

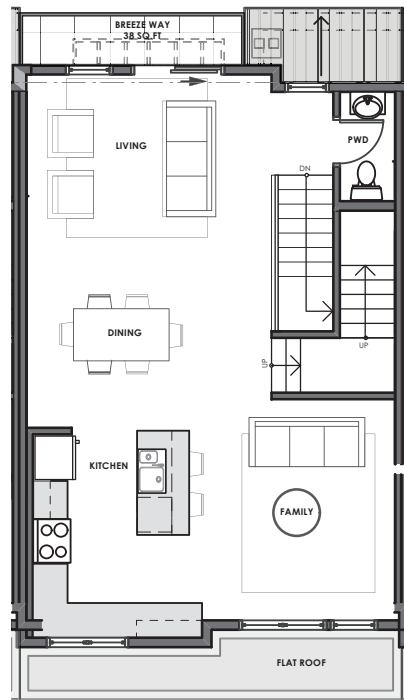
Homes #102, #106, #113, #116 #123

3-BEDROOM, 3-BATHROOM
2 CAR GARAGE: SIDE-BY-SIDE

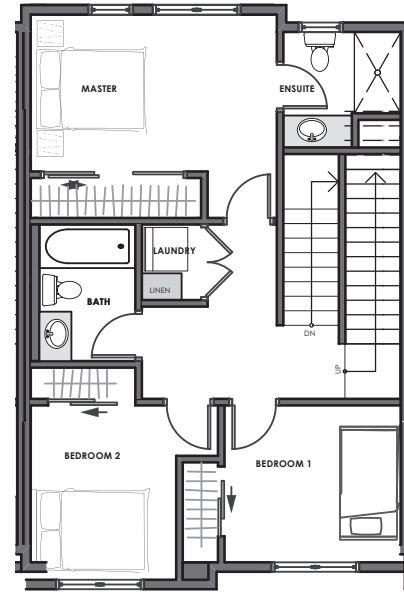
Total Interior: 1,482 Sq.Ft*
Total Exterior: 482 Sq.Ft*
Total Living: 1,964 Sq.Ft*



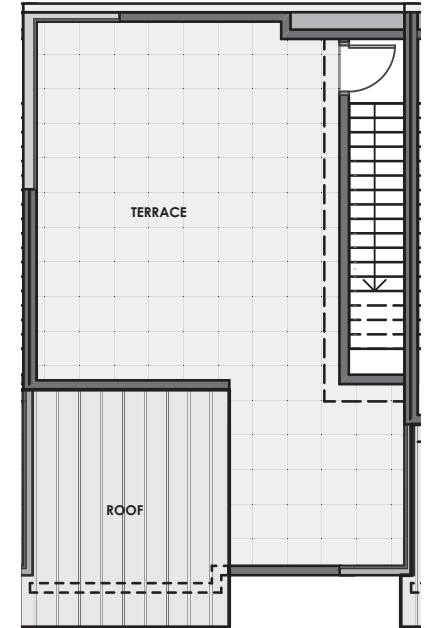
248 SQ.FT*



610 SQ.FT*



624 SQ.FT*



444 SQ.FT*

THE PEAKS

— KELOWNA, BC —

Nyrose and Associates
778-200-5634



thepeaksliving.ca

Developer reserves the right to make changes and modifications to size and specifications. Final design, construction, and features may differ. This is not an offering for sale. Any such offerings may only be made with a Disclosure Statement. E.&O.E. Sales & Marketing by DNA Project Marketing and Nyrose & Associates | RE/MAX Kelowna.

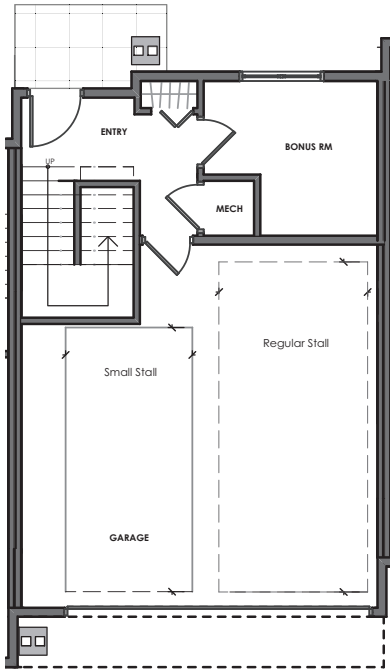
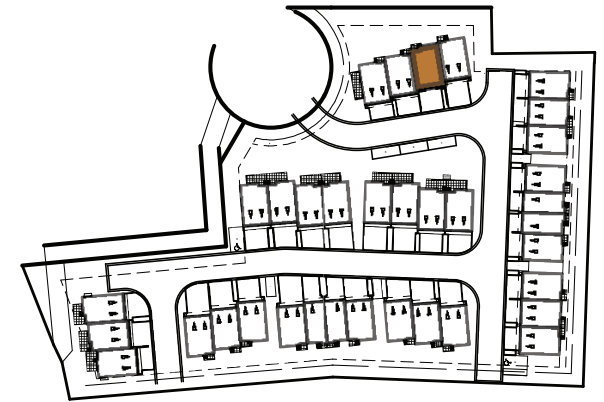


BOULDER (B1-B)

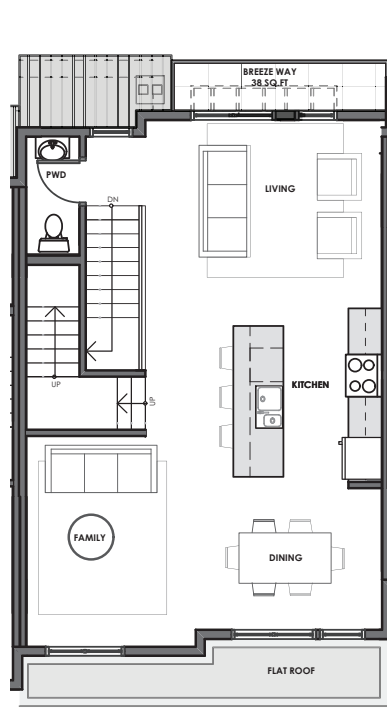
Home #103

3-BEDROOM, 3-BATHROOM
2 CAR GARAGE: SIDE-BY-SIDE

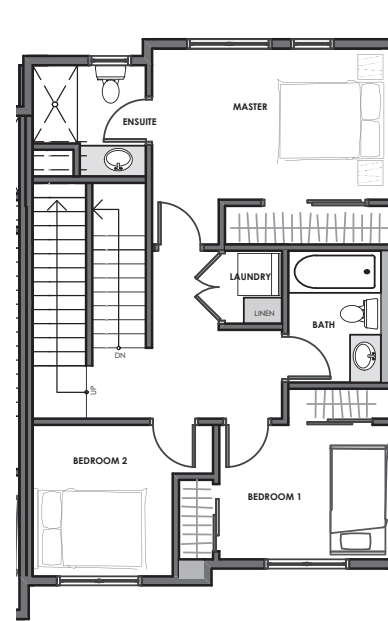
Total Interior: 1,487 Sq.Ft*
Total Exterior: 508 Sq.Ft*
Total Living: 1,995 Sq.Ft*



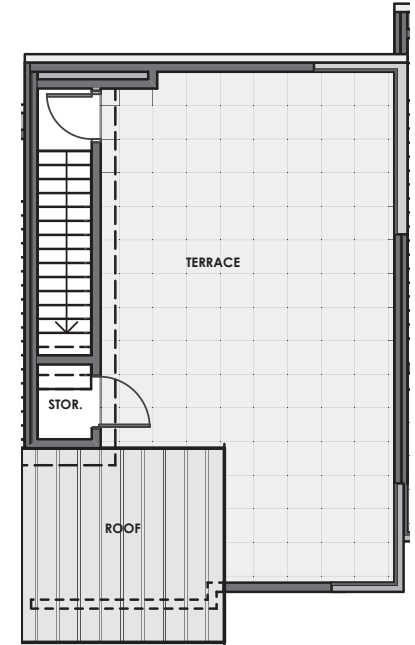
255 SQ.FT*



608 SQ.FT*



624 SQ.FT*



470 SQ.FT*

THE PEAKS

— KELOWNA, BC —

Nyrose and Associates
778-200-5634



thepeaksliving.ca

Developer reserves the right to make changes and modifications to size and specifications. Final design, construction, and features may differ. This is not an offering for sale. Any such offerings may only be made with a Disclosure Statement. E.&O.E. Sales & Marketing by DNA Project Marketing and Nyrose & Associates | RE/MAX Kelowna.

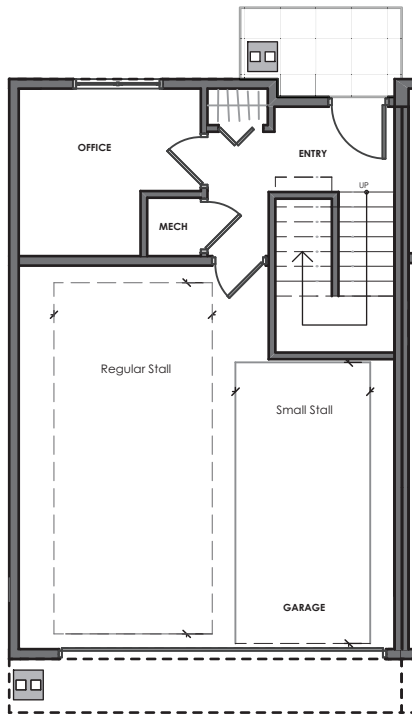
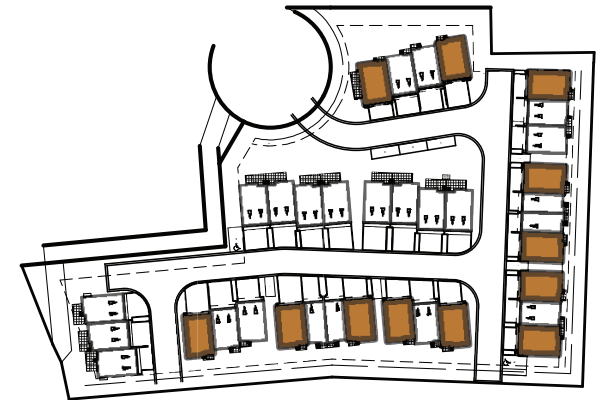


BERG (B2-A)

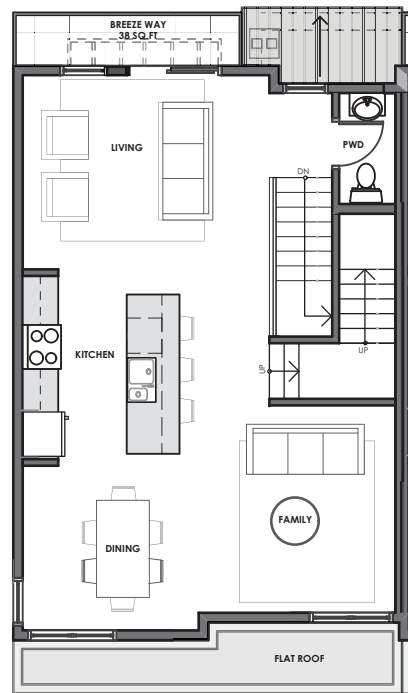
3-BEDROOM, 3-BATHROOM
2 CAR GARAGE: SIDE-BY-SIDE

Homes #101, #104, #105, #108, #111, #112,
#114, #115, #117, #118, #121, #124

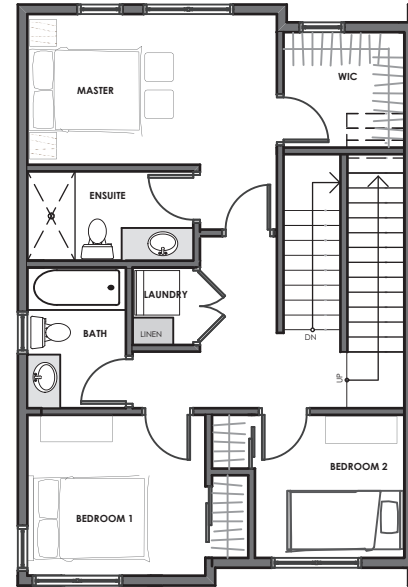
Total Interior: 1,500 Sq.Ft*
Total Exterior: 482 Sq.Ft*
Total Living: 1,982 Sq.Ft*



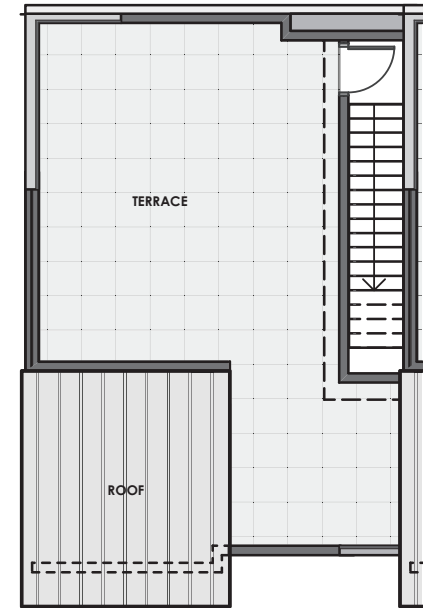
262 SQ.FT*



615 SQ.FT*



623 SQ.FT*



444 SQ.FT*

THE PEAKS

— KELOWNA, BC —

Nyrose and Associates
778-200-5634



thepeaksliving.ca

Developer reserves the right to make changes and modifications to size and specifications. Final design, construction, and features may differ. This is not an offering for sale. Any such offerings may only be made with a Disclosure Statement. E.&O.E. Sales & Marketing by DNA Project Marketing and Nyrose & Associates | RE/MAX Kelowna.

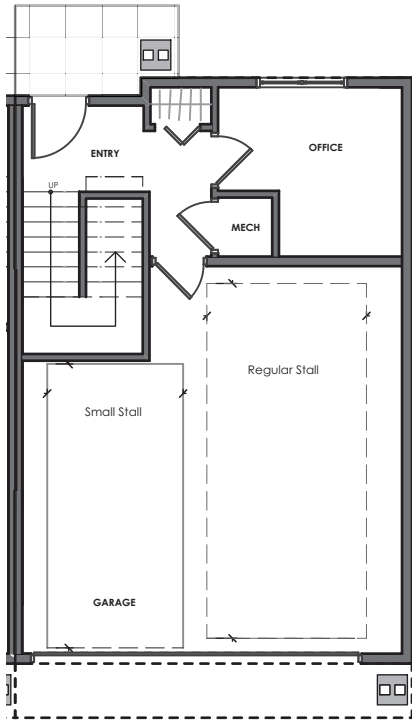
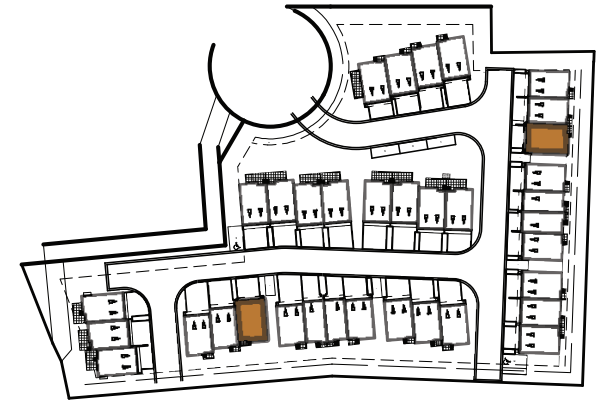


BERG (B2-B)

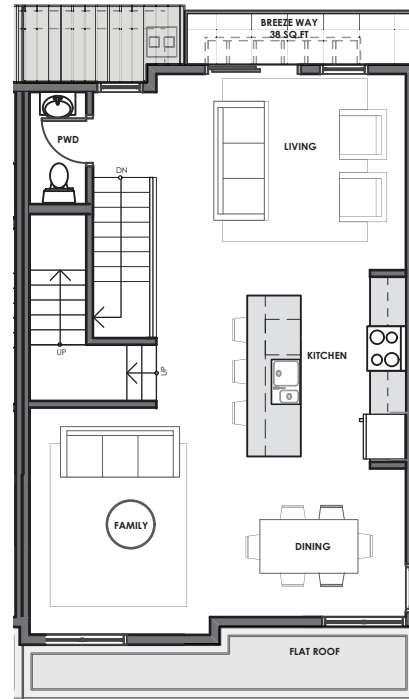
3-BEDROOM, 3-BATHROOM
2 CAR GARAGE: SIDE-BY-SIDE

Homes #107 & #122

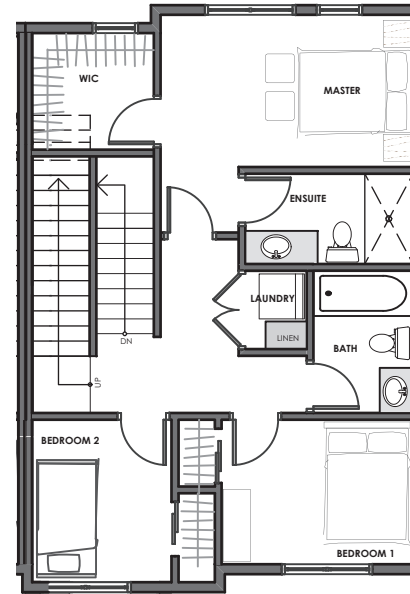
Total Interior: 1,500 Sq.Ft*
Total Exterior: 488 Sq.Ft*
Total Living: 1,988 Sq.Ft*



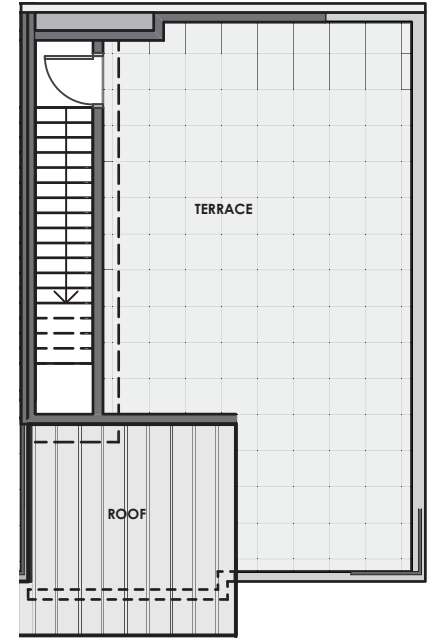
262 SQ.FT*



615 SQ.FT*



623 SQ.FT*



450 SQ.FT*

THE PEAKS

— KELOWNA, BC —

Nyrose and Associates
778-200-5634



thepeaksliving.ca

Developer reserves the right to make changes and modifications to size and specifications. Final design, construction, and features may differ. This is not an offering for sale. Any such offerings may only be made with a Disclosure Statement. E.&O.E. Sales & Marketing by DNA Project Marketing and Nyrose & Associates | RE/MAX Kelowna.

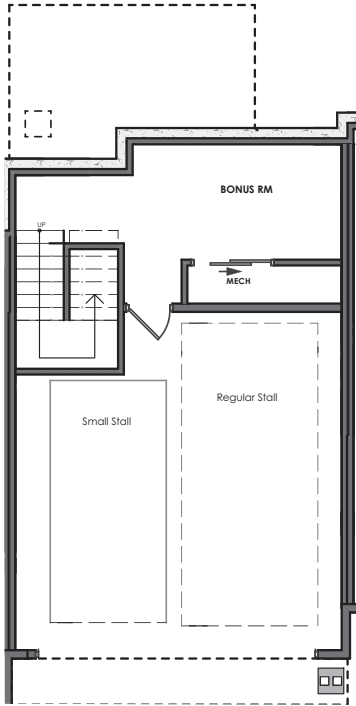
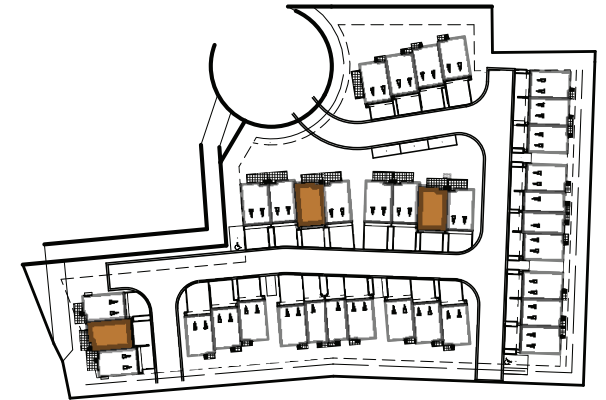


CLIFF (C1-A)

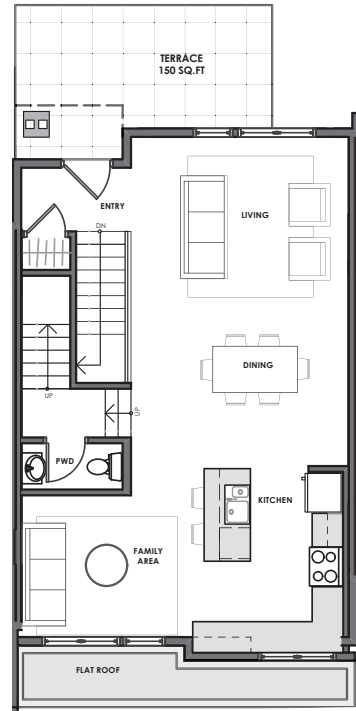
3-BEDROOM, 3-BATHROOM
2 CAR GARAGE: SIDE-BY-SIDE

Homes #126, #130, #134

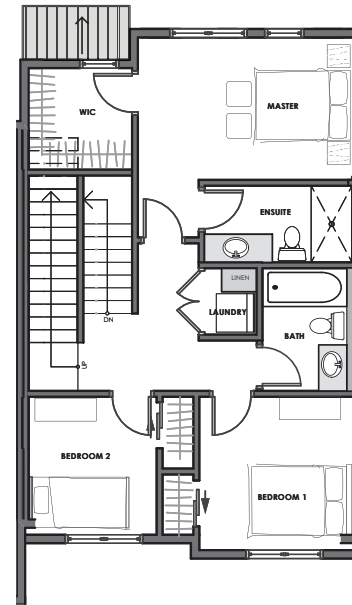
Total Interior: 1,551 Sq.Ft*
Total Exterior: 605 Sq.Ft*
Total Living: 2,156 Sq.Ft*



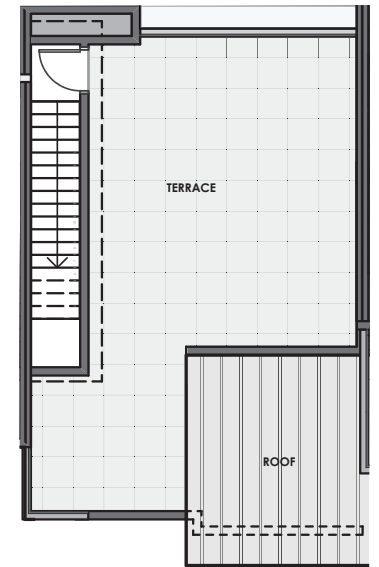
263 SQ.FT*



644 SQ.FT*



644 SQ.FT*



455 SQ.FT*

THE PEAKS

— KELOWNA, BC —

Nyrose and Associates
778-200-5634



thepeaksliving.ca

Developer reserves the right to make changes and modifications to size and specifications. Final design, construction, and features may differ. This is not an offering for sale. Any such offerings may only be made with a Disclosure Statement. E.&O.E. Sales & Marketing by DNA Project Marketing and Nyrose & Associates | RE/MAX Kelowna.

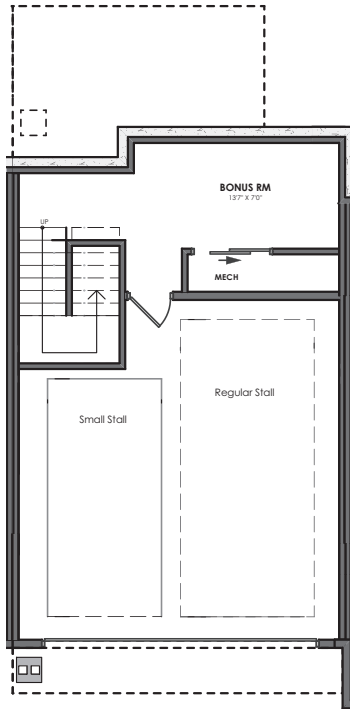
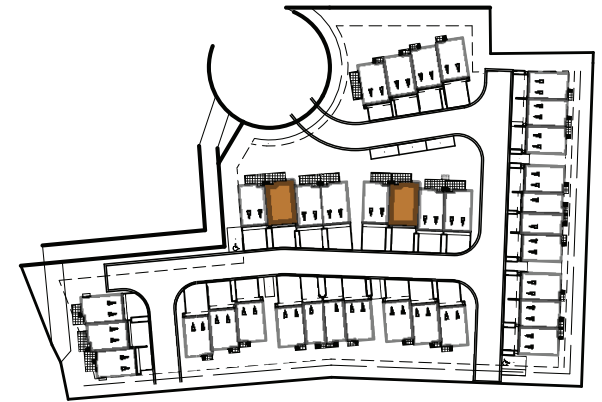


CLIFF (C1-B)

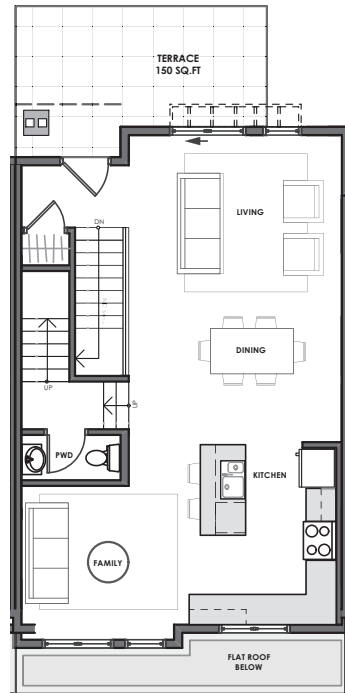
3-BEDROOM, 3-BATHROOM
2 CAR GARAGE: SIDE-BY-SIDE

Homes #129 & #133

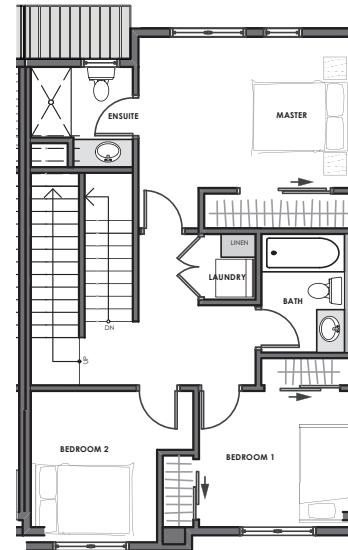
Total Interior: 1544 Sq.Ft*
Total Exterior: 644 Sq.Ft*
Total Living: 2,188 Sq.Ft*



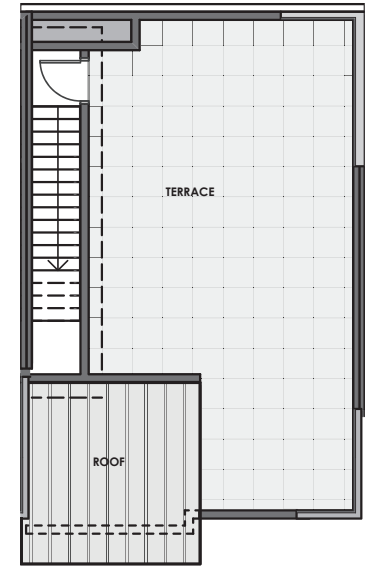
256 SQ.FT*



644 SQ.FT*



644 SQ.FT*



494 SQ.FT*

THE PEAKS

— KELOWNA, BC —

Nyrose and Associates
778-200-5634



thepeaksliving.ca

Developer reserves the right to make changes and modifications to size and specifications. Final design, construction, and features may differ. This is not an offering for sale. Any such offerings may only be made with a Disclosure Statement. E.&O.E. Sales & Marketing by DNA Project Marketing and Nyrose & Associates | RE/MAX Kelowna.

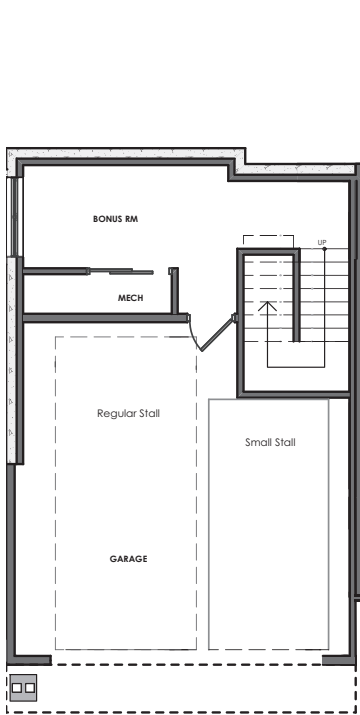
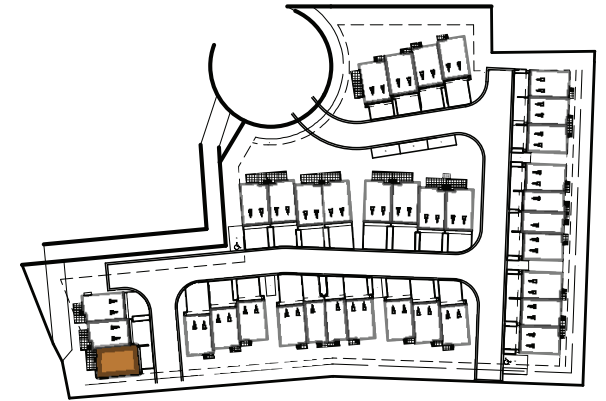


CROWN (C2-A)

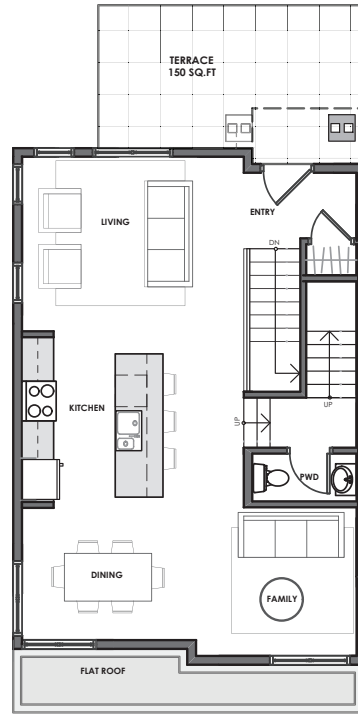
3-BEDROOM, 3-BATHROOM
2 CAR GARAGE: SIDE-BY-SIDE

Home #125

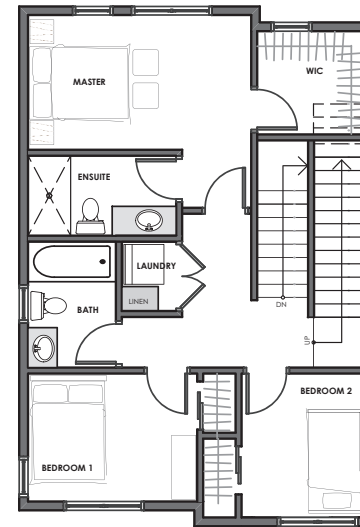
Total Interior: 1486 Sq.Ft*
Total Exterior: 600 Sq.Ft*
Total Living: 2,086 Sq.Ft*



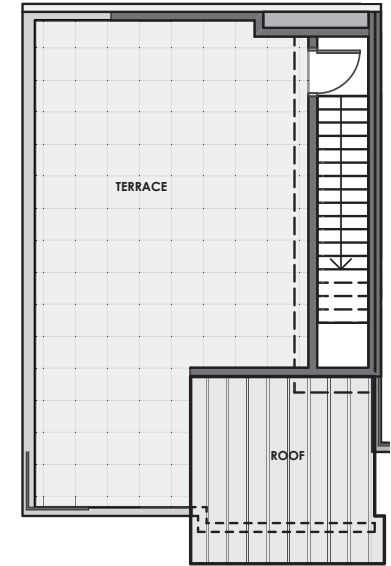
248 SQ.FT*



615 SQ.FT*



623 SQ.FT*



450 SQ.FT*

THE PEAKS

— KELOWNA, BC —

Nyrose and Associates
778-200-5634



thepeaksliving.ca

Developer reserves the right to make changes and modifications to size and specifications. Final design, construction, and features may differ. This is not an offering for sale. Any such offerings may only be made with a Disclosure Statement. E.&O.E. Sales & Marketing by DNA Project Marketing and Nyrose & Associates | RE/MAX Kelowna.

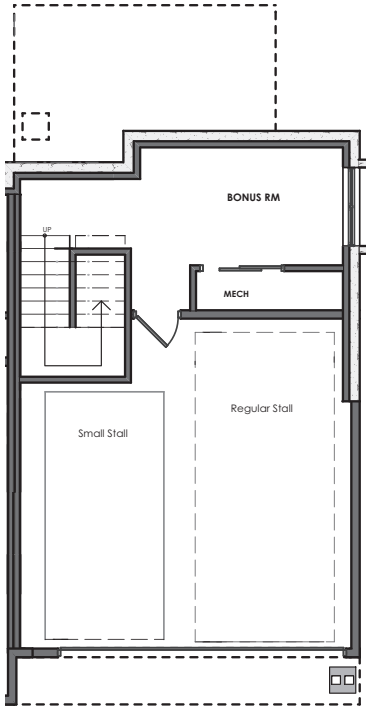
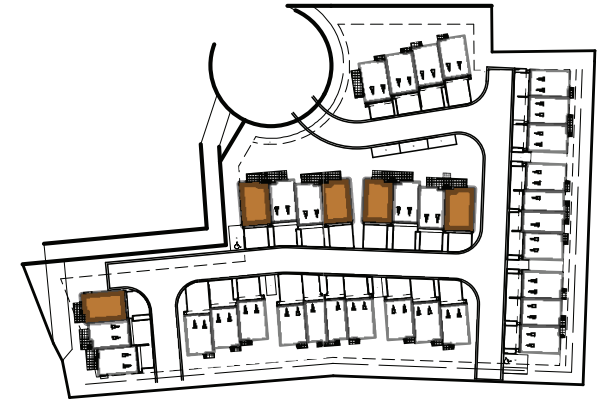


CROWN (C2-B)

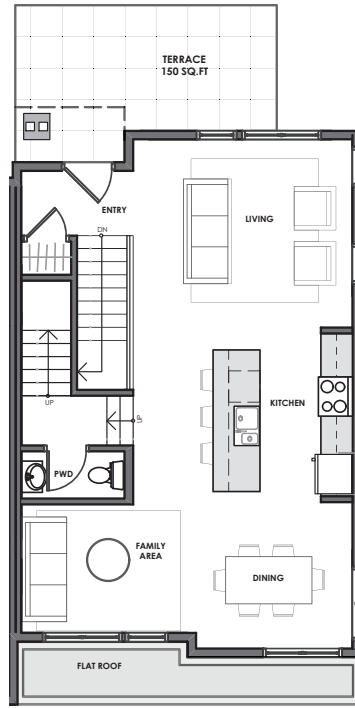
3-BEDROOM, 3-BATHROOM
2 CAR GARAGE: SIDE-BY-SIDE

Homes #127, #128, #131, #132, #135

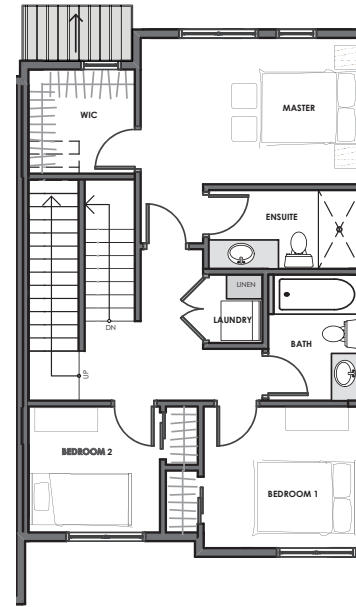
Total Interior: 1520 Sq.Ft*
Total Exterior: 580 Sq.Ft*
Total Living: 2100 Sq.Ft*



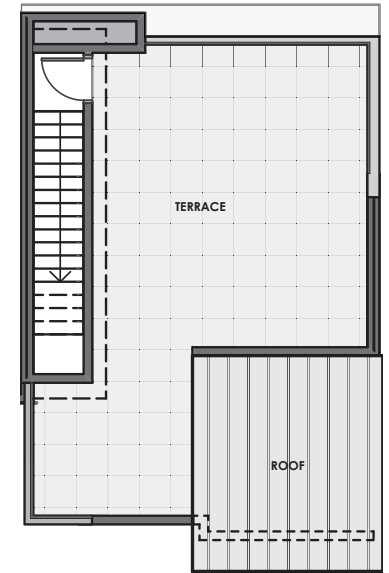
256 SQ.FT*



626 SQ.FT*



638 SQ.FT*



430 SQ.FT*

THE PEAKS

— KELOWNA, BC —

Nyrose and Associates
778-200-5634



thepeaksliving.ca

Developer reserves the right to make changes and modifications to size and specifications. Final design, construction, and features may differ. This is not an offering for sale. Any such offerings may only be made with a Disclosure Statement. E.&O.E. Sales & Marketing by DNA Project Marketing and Nyrose & Associates | RE/MAX Kelowna.

COMMUNITY AMENITIES WITHIN REACH



UBCO & KELOWNA INTERNATIONAL AIRPORT



PARKS AND RECREATION

- Knox Mountain Park and Disc Golf
- Glenmore Ridge Trail
- Sutherland Bay Park
- Brandt's Creek Park
- Dilworth Mountain Park
- Waterfront Park
- Tugboat Beach
- Kelowna Golf & Country Club
- Kelowna Badminton Club
- Kelowna Curling Club
- Parkinson Recreation Centre and Apple Bowl Stadium
- Prospera Place



SCHOOLS

- Watson Road Elementary School
- Dr. Knox Middle School
- Bankhead Elementary School
- Glenmore Elementary
- Lil' Dancing Owls Day Care



SHOPS AND SERVICES

- Save-On Foods & Pharmacy
- IGA
- Shoppers Drug Mart
- Safeway
- Bosley's Pet Store
- Lifestyle Dentistry
- Great Glips
- Glenmore Hair Studio
- Victoria's Nails & Spa
- Central Valley Vet
- Orchard Park Mall
- Towne Centre Mall



DINING

- Brandt's Creek Pub
- O-Machi
- Flip Flops & Hops
- Bon Ga Korean
- Basil Leaf
- Satang Thai
- Dozo House
- Yama Kitchen
- Bouchons Bistro
- Train Station Pub
- Central Kitchen & Bar
- Cactus Club / Kelowna Yacht Club



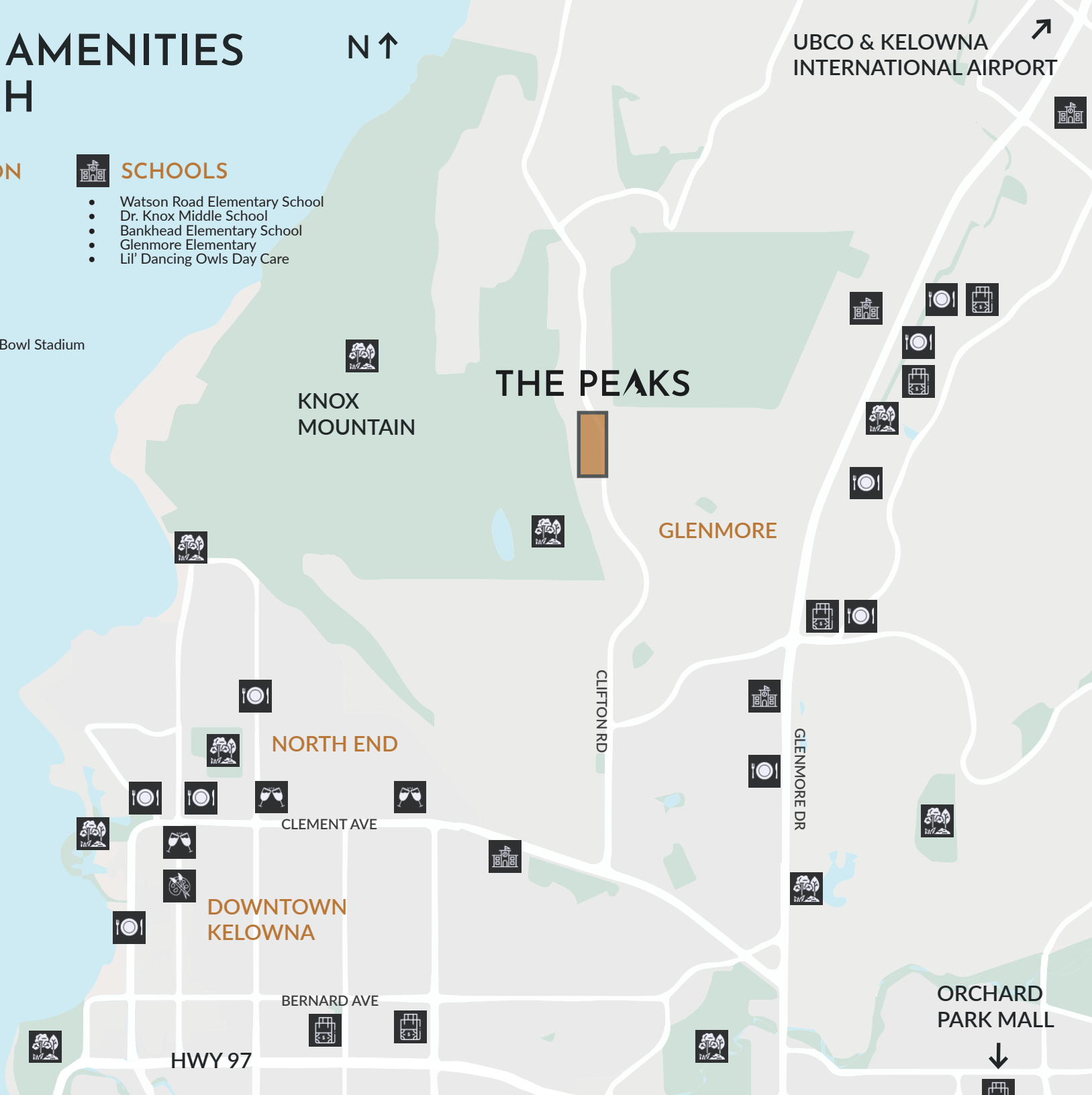
WINE & BREW

- Sandhill Winery
- Bad Tattoo Brewing
- BC Tree Fruits Cider
- Rustic Reel Brewing
- BNA Brewing



ARTS & CULTURE

- Kelowna Arts & Culture District
- Rotary Centre for the Arts
- Kelowna Art Gallery



THE PEAKS

— KELOWNA, BC —

thepeaksliving.ca

1402 Cara Glen Way | 778-200-5634 | thepeaks@dnaprojectmarketing.com

Sales and Marketing by DNA Project Marketing & Nyrose and Associates | RE/MAX Kelowna.



RE/MAX
Kelowna