



Preview Package

WWW.LIVEATQUAIL.COM



Where
delightful
recreation
meets
functional
livability.



Discover a vibrant oasis and a thriving Okanagan community.

Embrace a recreation-centric lifestyle that can only be found in the scenic heart of the Okanagan Valley. Unparalleled accessibility to world-class golf, endless outdoor activities and uniquely regional arts and culture juxtapose the idyllic tranquility of your neighborhood. Quail Landing redefines the residential experience, encouraging year-round exploration and inspiring connection with your family, neighbors, and community.



Top 5 reasons why you'll love to live at Quail Landing.



1

CRC DEVELOPMENTS

With 30 years of experience in developing recreational properties — from The Village at Gallagher's Canyon to communities in Whistler and Vancouver Island — CRC brings a deep experience in delivering premium lifestyles to homeowners.



2

GORGEOUS, USER-CENTRIC LIVING SPACES

Modern yet timeless, our homes offer an elevated level of quality and craftsmanship, with thoughtful design that compliments the beauty of the championship golf course and serene landscape.



3

PROXIMITY TO AMENITIES

With YLW's variety of retail services and boutiques just minutes' drive away, and the Okanagan Golf Club at your doorstep, Quail Landing offers the best of both urban and recreational amenities.



4

SPECTACULAR VIEWS

Flanked by groves of Ponderosa Pines, rolling hillsides, and tranquil waters, Quail Landing is truly an idyllic place to call home.



5

A QUINTESSENTIAL OKANAGAN RECREATIONAL LIFESTYLE

Unparalleled accessibility to 2 championship golf courses, endless outdoor activities, and uniquely regional arts and culture, right at your fingertips.



Home is here.

Nestled along the 18th hole of the Quail Course at the Okanagan Golf Club, Quail Landing is where delightful recreation meets functional livability. Our stunning collection of 2 and 3 bedroom townhomes is located in the heart of a breathtaking landscape, offering ultimate access to one of British Columbia's most distinguished golf destinations. With the Kelowna International Airport just minutes away and close proximity to a variety of shopping amenities, Quail Landing embodies both urban refinement and the serenity of nature.

05
MIN

YLW

Flying out to visit your loved
ones has never been so easy.

10
MIN

UBCO

Lifelong learning at UBCO
to nurture the mind and soul.

20
MIN

DOWNTOWN KELOWNA

The perfect distance from metropolitan
hustle and bustle.

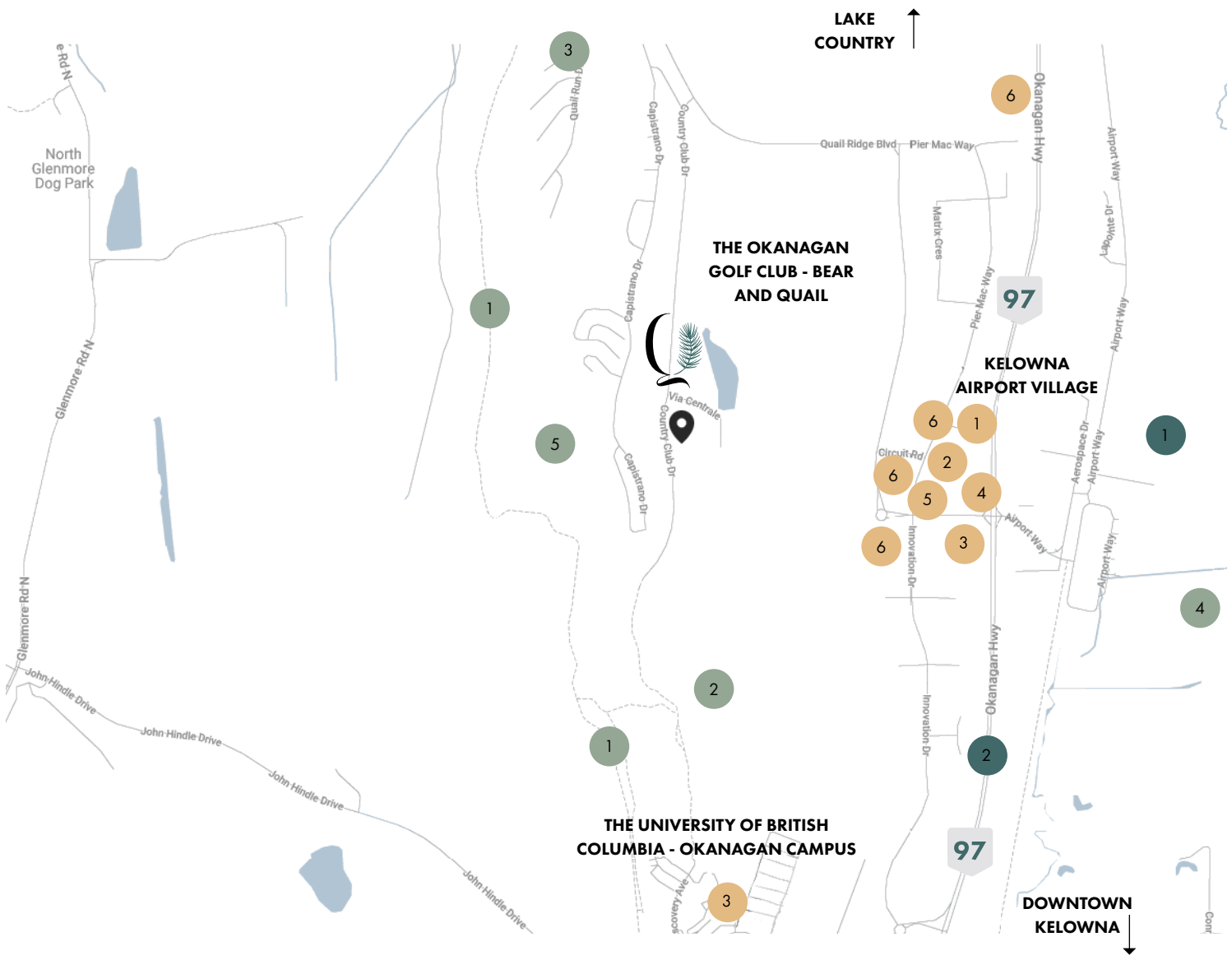
60
MIN

BIG WHITE SKI RESORT

Be on the slopes
whenever the urge strikes.

Location Map.

Quail Landing is nestled in the quiet community of Quail Ridge, tucked away from the bustle and excitement of the city. At the same time, world-class recreation and all the amenities of urban living are at your fingertips.



Outdoor activities

- 1. Quail Ridge Linear Park
- 2. Pine Trail Lookout
- 3. Quail Place Park
- 4. High Noon Park
- 5. Playground

Essentials: Grocery & Shopping

- 1. Nesters Market
- 2. Pharmasave
- 3. Starbucks
- 4. Dentist
- 5. Dry Cleaners
- 6. Restaurants

Transportation

- 1. YLW Airport
- 2. Highway 97

The developer reserves the right to make changes and modifications to the information contained herein. Maps, views, and photography are representational only and are not necessarily accurate, and final design, construction, and features may differ. Images are an artist's conception and intended as general reference only. This is not an offering for sale. Any such offerings may only be made with a Disclosure Statement. Prices, floorplans, specs are subject to change. E.&O.E. Sales by Nyrose and Associates of RE/MAX Kelowna, an independent member broker.

A stunning collection of 2 and 3 bedroom homes.





Sophisticated
function,
understated
elegance.

Finishing touches to make it yours.

Our Ponderosa package tempers rustic touches with contemporary, refined charm, featuring neutral palettes and warm wooden accents. Meanwhile, our Agate palette hints at an appreciation for the dramatic, with rich tonal contrast and unexpected yet harmonious details.



PONDEROSA



AGATE



Form Meets Function.

AGATE

1. Colour Palette
2. Flooring
3. Wall Tile
4. Countertops
5. Fireplace Surround



Form Meets Function.

PONDEROSA

1. Colour Palette
2. Flooring
3. Wall Tile
4. Countertops
5. Fireplace Surround



Features.

LOCATION & AMENITIES

- Positioned along the 18th hole of the Championship Quail Course at the Okanagan Golf Club
- Manicured nature, golf and waterfront views
- Outdoor covered firepit for resident-only use
- Private entrance and road

LIVING

- Bright, modern interiors curated by Hatch Interior Design
- Wide plank German-made laminate wood flooring with Aqua Protect throughout the main living areas
- Classic textured broadloom carpet in bedrooms
- Energy efficient windows
- Sliding doors for a seamless transition between indoor and outdoor living spaces
- Energy efficient LED Lighting
- Built-in linear gas fireplace with stone surround
- Solid core interior bedroom and bathroom doors
- Energy Star® Rated washer and dryer
- Natural gas BBQ hook up on exterior patios
- Electric vehicle charging station (upgrade)
- Energy efficient heating and air conditioning

- Voluminous 9' ceiling heights
- Open tread wood staircase (Lakeview Collection)
- 2-5-10 Year New Home Warranty Coverage
- Meets Step 3 of BC's Energy Code

LAUNDRY

- Stackable Whirlpool front load washer and energy-efficient heat pump dryer
- Large-format tile flooring

KITCHEN

- Entertaining, inspired kitchens
- Stainless steel KitchenAid® appliances including:
 - 36" counter-depth Energy Star® rated French door refrigerator
 - 5 burner gas range with 3 speed hood fan and LED task lights
 - KitchenAid's quietest dishwasher at 39 dba
 - Microwave with stainless steel trim kit
- Custom kitchen islands with additional cabinet storage and pendant lighting

- Polished quartz countertop and double undermount sink
- Timeless shaker panel cabinetry with under-cabinet lighting and soft close hardware
- Chrome fixtures and brushed nickel cabinet hardware
- Recessed contemporary display shelving (Lakeview Collection)
- Waterfall countertop (Lakeview Collection)

BEDROOMS

- Roller shades

PRIMARY ENSUITE

- Spa inspired design
- Large-format tile flooring
- Polished quartz countertop with undermount sink
- Motion sensor under-cabinet lighting
- Shaker style cabinets
- Chrome fixtures and brushed nickel accessories
- Heated tile flooring
- Custom glass shower enclosure with bench and tile surround

**Developer reserves the right to make changes to features at any time.*

Site Plan.

Quail Landing reimagines the home and hearth to be a place that delivers utmost comfort, fosters interpersonal connection, and is at one with the wider context of the great outdoors.



LAKEVIEW COLLECTION

Panoramic views of the Quail course's manicured 18th hole frames the breathtaking beauty of an adjacent lake. Settling on your terrace as a golden sunset illuminates the waters is the ultimate close to an irreplaceable day at Quail.



PINEVIEW COLLECTION

With the living floor perched above your two-car garage, the Pineview Collection boasts views of a sweeping forest-scape to the west and glimpses of an immaculate golf course to the east.

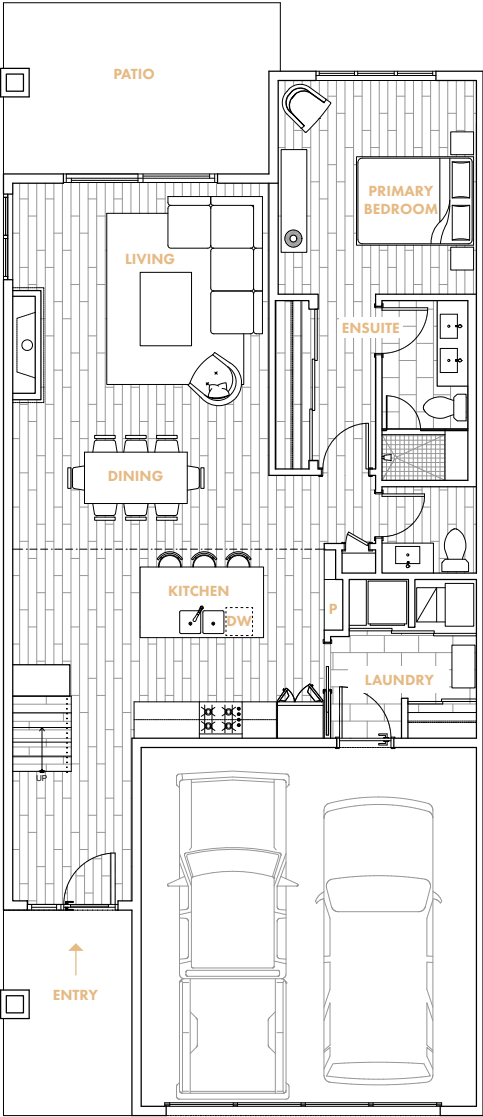


Lakeview | 3 Bedrooms

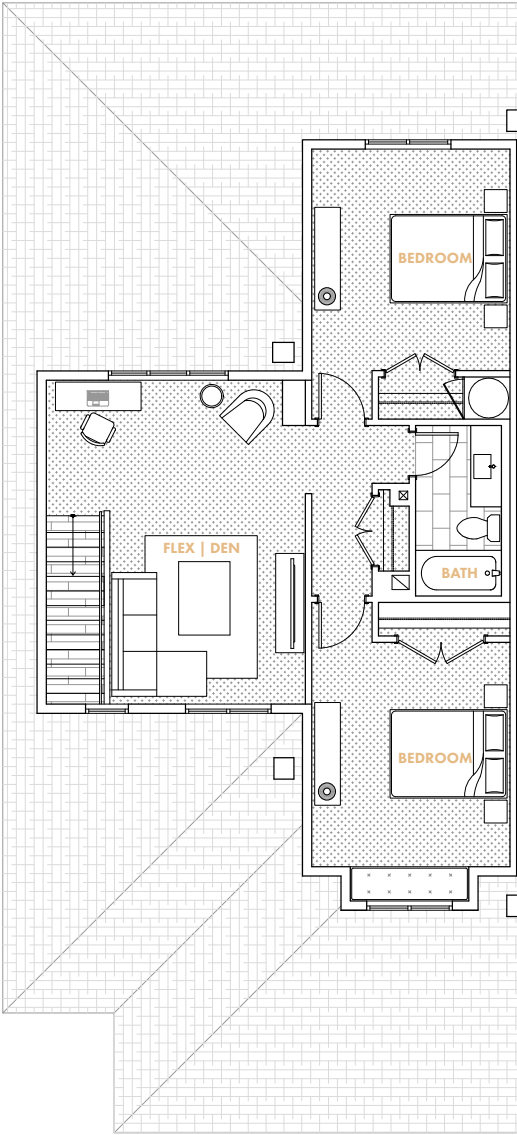
3 BEDROOMS + FLEX/DEN, 3 BATHROOMS
LIVING SPACE: 1,953 Sq Ft*
LAKEVIEW COLLECTION



Sales by Nyrose & Associates of RE/MAX Kelowna. This is not an offering for sale. Any such offerings may only be made with a Disclosure Statement. The floor plans are drawn to varying scales, and should not be relied on as representations, express or implied.* Square footage or floor areas shown in any marketing or other materials are approximate and may more or less than the actual size. Seller reserves the right to change the product offering without notice. E&OE.



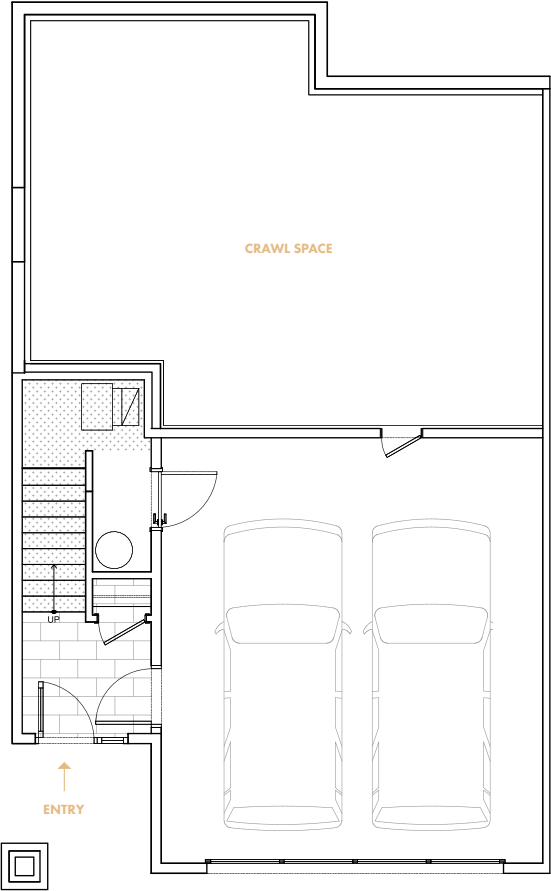
LOWER LEVEL



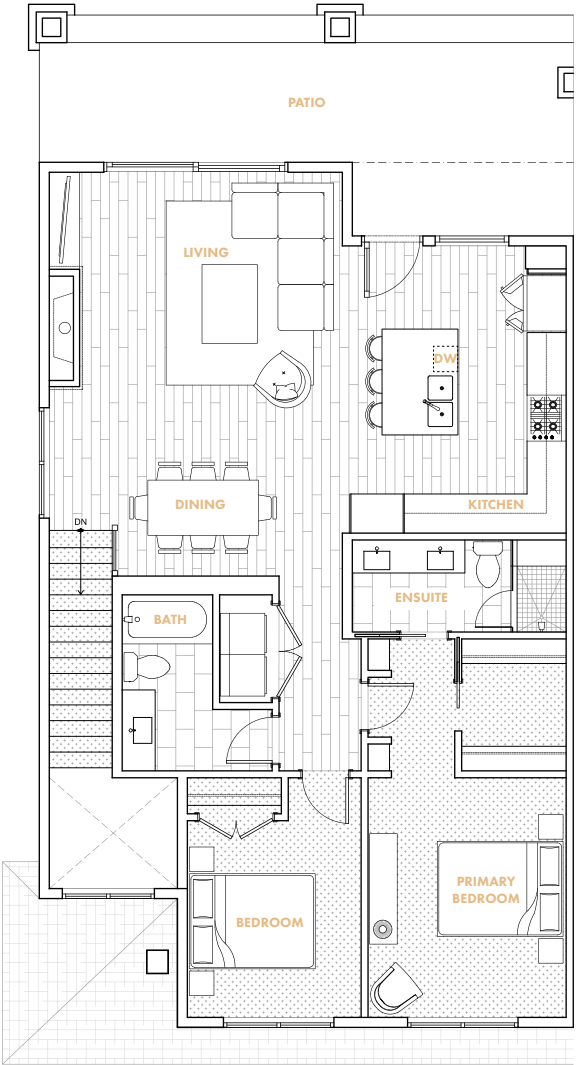
MAIN LEVEL

Pineview | 2 Bedrooms

2 BEDROOMS, 2 BATHROOMS
LIVING SPACE: 1,324 Sq Ft*
PINEVIEW COLLECTION



LOWER LEVEL



MAIN LEVEL



Sales by Nyrose & Associates of RE/MAX Kelowna. This is not an offering for sale. Any such offerings may only be made with a Disclosure Statement. The floor plans are drawn to varying scales, and should not be relied on as representations, express or implied. * Square footage or floor areas shown in any marketing or other materials are approximate and may more or less than the actual size. Seller reserves the right to change the product offering without notice. E&OE.



Our mission is to create places
for people of all ages that inspire
activity & recreation.

CRC
DEVELOPMENTS

[CRCDEVELOPMENTS.COM](https://crcdevelopments.com)

THIS IS CRC DEVELOPMENTS

Established in 1987, CRC's legacy is one of world class master planned communities adjacent to championship golf properties. Residents of CRC projects enjoy an active, recreationally oriented lifestyle at their fingertips. Our properties put resident recreational lifestyle enjoyment at the forefront of our design process so that when people experience a CRC property, they are inspired to become more active and improve themselves.



liveatquail.com

CRC
DEVELOPMENTS

NYROSE
AND ASSOCIATES
KELOWNAREALTYGROUP.COM

DNA
PROSPECT MANAGEMENT

RE/MAX
Kelowna

CRC DEVELOPMENTS

INFO@LIVEATQUAIL.COM
INFO@CRCDEVELOPMENTS.COM

P: 778.383.6914