

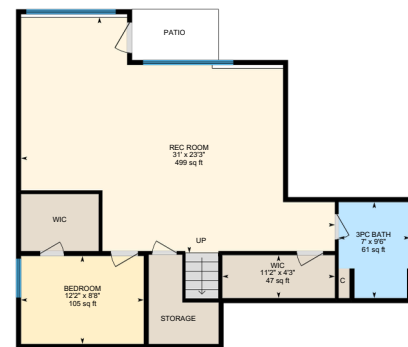
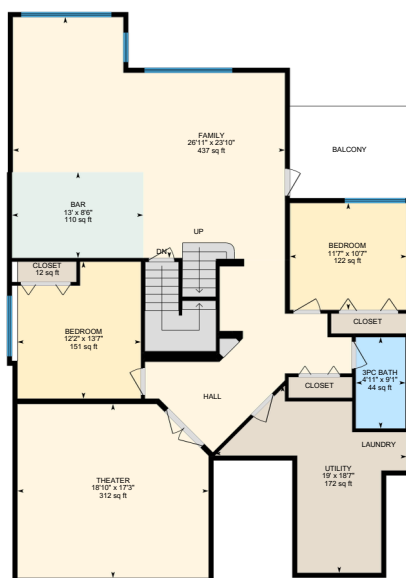
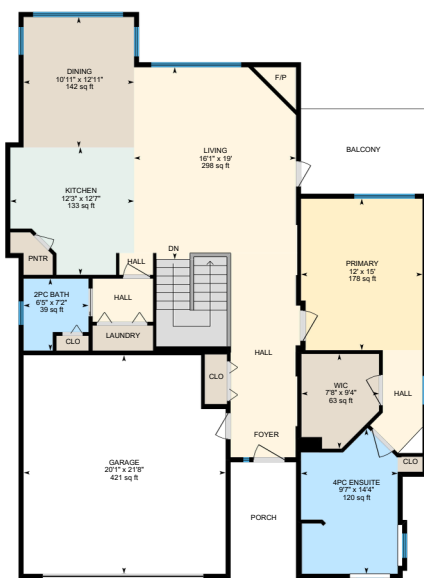


115-550 GLENMEADOWS RD





EXPLORE THE FLOOR PLAN



ABOUT THE HOME


Unbeatable location! Nestled in the heart of Glenmore on a peaceful cul-de-sac, this expansive 3-level walkout rancher offers over 4,000 sqft of well-appointed living space, including 4 bedrooms and 4 bathrooms. Enjoy the convenience of a double car garage and direct access to scenic hiking and mountain biking trails surrounding Kathleen Lake and Knox Mountain—right outside your front door. Inside, soaring 13-foot ceilings and large windows flood the main level with natural light. Gaze out at stunning views of Dilworth Mountain from one of two spacious decks. The lower level features a private entrance, and the layout includes two sets of washer/dryers for added convenience. Enjoy movie nights in the theatre room, fully pre-wired for Dolby 5.1 surround sound and complete with a 3D projector. Additional highlights include a new steam shower, wine fridge, jacuzzi tub in the ensuite, hydronic heating on the lower two floors, central air conditioning, and generous street parking. This is a rare opportunity to own a home that blends comfort, space, and exceptional lifestyle amenities.



115-550

GLENMEADOWS RD

3-level walkout rancher

 4
Bedrooms

 4
Bathrooms


Plenty of
Parking.

 4,274
Square Feet

**PRESENTED BY
DEREK NYROSE**

CONTACT DEREK AT:
250-878-8817 OR
DEREK@KELOWNAREALESTATEPROS.COM



THEATRE



DECK



KITCHENETTE



LAUNDRY

THE NEIGHBOURHOOD

Convenient, peaceful living.

Glenmore is a family-friendly community located 10 minutes from downtown. Convenient to schools, restaurants, shops, and a recreation centre, it's a popular choice for family living. This friendly and welcoming enclave boasts heaps of mature trees, orchards, and convenient access to nature-filled strolls and trails.



GLENMORE



250-878-8817



KELOWNAREALESTATEPROS.COM

*Not intended to solicit buyers/sellers already in an agency agreement with another real estate agent/brokerage

Your DREAM home
awaits.

115-550 GLENMEADOWS RD



PROUDLY PRESENTED BY NYROSE AND ASSOCIATES



DEREK NYROSE
REALTOR®

250-878-8817

derek@kelownarealestatepros.com



DARCY NYROSE
Personal Real Estate Corporation

250-575-1946

darcy@kelownarealestatepros.com

YOUR NOTEPAD

WHAT YOU LOVE ABOUT THIS HOME

*The information contained herein is assumed correct but is not guaranteed by the listing agent and should be verified. Measurements are approximate.



250-878-8817



KELOWNAREALESTATEPROS.COM

*Not intended to solicit buyers/sellers already in an agency agreement with another real estate agent/brokerage