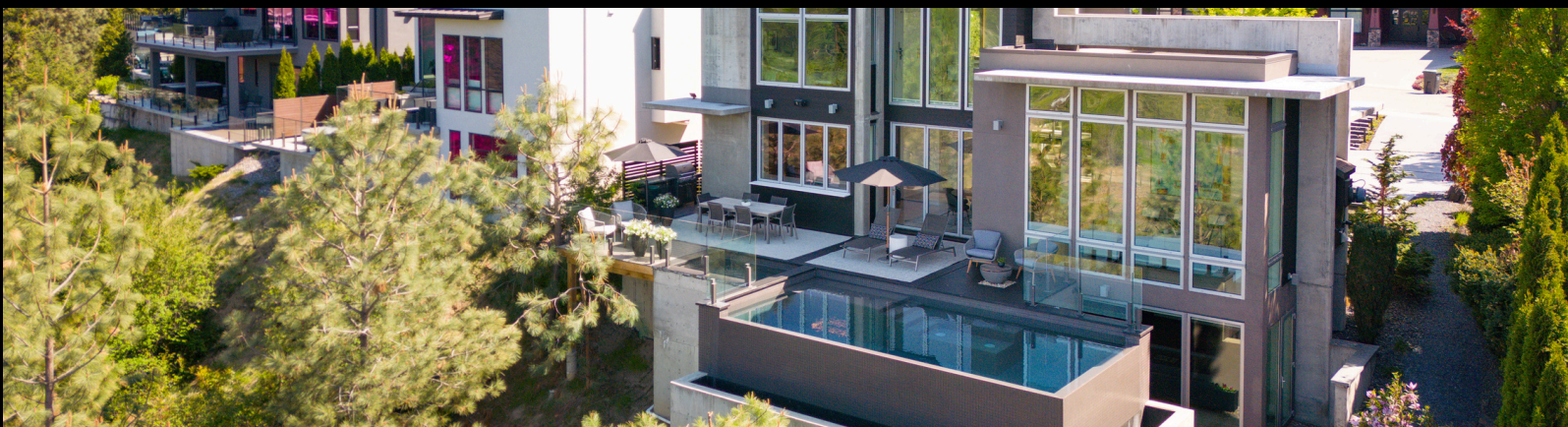


1076 WESTPOINT DRIVE

Luxury Living... defined.



4



4



4,100 sq. ft.*



THE HOME:

Executive Concrete Contemporary Statement Home in Kelowna's Lower Mission. This one-of-a-kind concrete and glass home is a statement, perfectly positioned to capture views of Okanagan lake, the city, and vineyards. Sleek sophistication is paired with warm modern design, from its dramatic staircase with floating stairs to the European white oak floors and high-gloss stretch ceilings with ambient inset lighting. Every detail was curated to impress. Designed for entertaining, the open-concept main floor seamlessly flows out through nano doors to multiple outdoor patios and seating areas, including an eating bar with nano pass-through window. A rooftop patio, hot tub, and a stunning infinity pool that has the illusion it's floating. Inside, the designer kitchen features two-tone Liecht cabinetry, top-of-the-line Miele appliances, double built-in ovens, a cooktop, built-in espresso machine, fridge, freezer, and wine fridge, ideal for gatherings on any scale. Additional features include a Carrara marble fireplace, high-end commercial-grade doors and windows, xeriscaped landscaping and a 2-car garage with epoxy-coated floors. See the home in person to fully appreciate the architectural significance, quality craftsmanship and luxury lifestyle it offers. Located in Kelowna's coveted Lower Mission, with easy access to Okanagan Lake, shops, restaurants, trails, and wineries.

THE NEIGHBOURHOOD:

The Lower Mission is a desirable Kelowna neighbourhood with couples, families and retirees. Have beaches, restaurants, pubs, cafes and shopping at your doorstep. It's a great location for those who want to be in the 'flats' of Kelowna and easily walk, bike or rollerblade to work, shopping, restaurants and the beach. The Lower Mission is the perfect location to live a vibrant Kelowna lifestyle.



ELEVATED FEATURES:

- A concrete and glass architectural masterpiece floating on water was the vision for architect Al Truss when designing this one-of-a-kind home near Mission Ridge Park
- Built from concrete, this home expertly pairs sleek sophistication with warm modern design
- Heated saltwater infinity pool with tile finish creates the illusion that it's floating and overlooks vineyards, city and Okanagan Lake
- Water feature in the front yard, approximately 18" deep with lighting
- 2-car garage with epoxy coating and reflective glass panel garage doors for added privacy
- Multiple sitting areas on a rooftop, and lakeview deck which offers a gas BBQ hookup
- Xeriscape landscaping captured from multiple living spaces throughout the home
- This "Smart Home" can be controlled conveniently from a phone
- Must be seen in person to appreciate the level of luxury details, design, architecture and craftsmanship



INTERIOR:

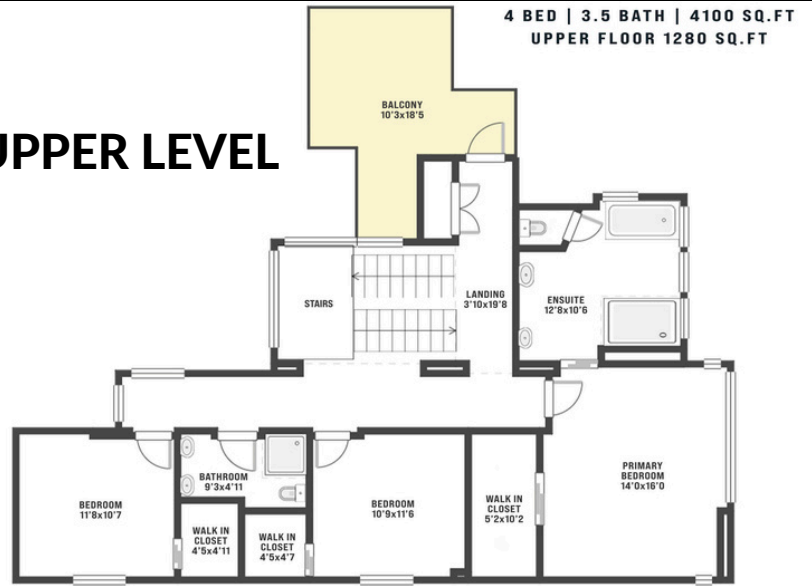
- Contemporary statement piece inside and out - designed for entertaining with open-concept main floor, family space on the lower level, and various outdoor patios and seating areas
- Concrete walls and German "stretch", high gloss ceilings with inset lighting, high quality commercial doors and windows
- 4 Bedrooms, 4 bathrooms, office, media room, gym, wet bar
- European white oak wooden floors
- High gloss stretch ceilings with inset lighting
- 2-story glass staircase with floating stairs and steel railings
- Top of the line Miele appliances in kitchen including double ovens, fridge, freezer, wine fridge, countertop cooktop and built-in espresso maker.
- 2-tone Liecht kitchen cabinetry from Germany
- Hidden Butler's Pantry
- Soft close cabinets
- Carrara marble fireplace
- Designer lighting
- Nano doors to pool deck with nano pass through window and outdoor eating bar
- Fully irrigated grounds for easy upkeep
- Main floor designed for entertaining with open-concept, office, various outdoor patios and seating areas
- Primary bedroom with walk-in closet and exquisite ensuite with double sinks, double shower and soaker tub and floor to ceiling windows
- Lower level - family space, 4th bedroom, media room, fitness room
- Exterior security cameras
- Hide-a-hose central vac



Please Note: information is believed to be from reliable sources; buyers should satisfy themselves as to its accuracy. All measurements are approximate.



UPPER LEVEL



1076 WESTPOINT DRIVE

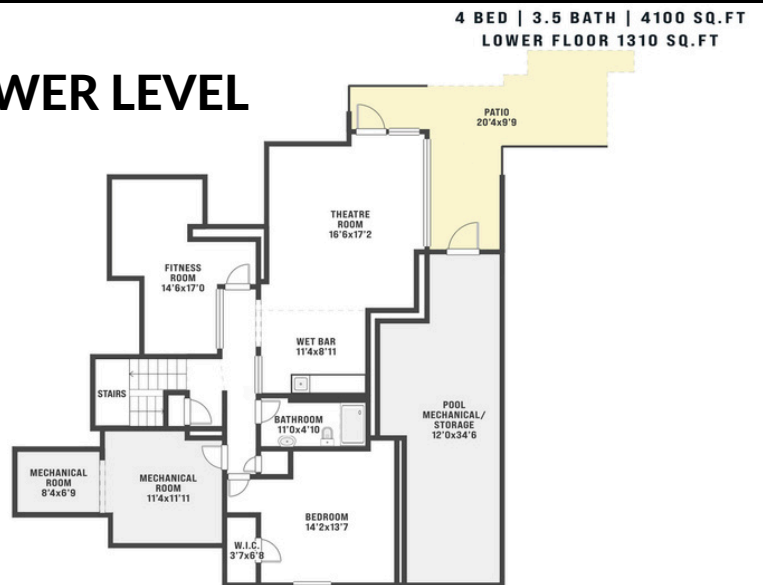
Tan & grey regions are excluded from the total floor area. All room dimensions and floor areas must be considered approximate and are subject to independent verification. Dimensions are taken from interior laser measurements.

MAIN LEVEL



1076 WESTPOINT DRIVE

LOWER LEVEL



1076 WESTPOINT DRIVE

Tan & grey regions are excluded from the total floor area. All room dimensions and floor areas must be considered approximate and are subject to independent verification. Dimensions are taken from interior laser measurements.





BREATHTAKING CUSTOM HOME IN LOWER MISSION



SPACIOUS HOME WITH SPECTACULAR VIEW

1076 Westpoint Drive



Your Notepad

WHAT YOU LOVE ABOUT THIS HOME

Proudly Presented by Nyrose and Associates
#1 Team RE/MAX Kelowna 2024



Derek Nyrose

REALTOR®

250-878-8817

derek@kelownarealestatepros.com



Darcy Nyrose

Personal Real Estate Corporation

250-575-1946

darcy@kelownarealestatepros.com

* The information contained herein is assumed correct but is not guaranteed by the listing agent and should be verified. Measurements are approximate.



NYROSE
AND ASSOCIATES

Nyrose Team: 250-258-9888
www.kelownarealestatepros.com

RE/MAX
Kelowna

RE/MAX Kelowna: 250-717-5000
100-1553 Harvey Ave, Kelowna BC V1Y 6G1